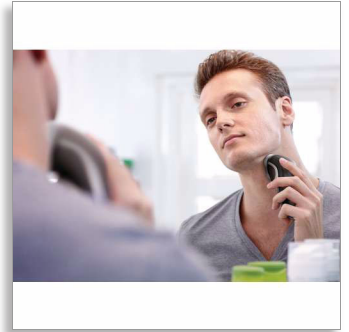




Philips Shaver series 3000
dry electric shaver

CloseCut

Flex & Float system
Pop-up trimmer
Nose and ear Trimmer



HQ6996/80



CloseCut

Close even on the neck

A close and comfortable shave for an affordable price thanks to the Flex & Float system combined with CloseCut blades. Now available with the Philips Nose and ear Trimmer 3000 to trim unwanted nose and ear hair.

Comfortably close

- CloseCut blades, durable and self-sharpening for close shave

Adjusts to every curve of your face and neck

- Flex & Float adjusts to face and neck curves

Easy to use

- Ergonomically designed grip for easy handling
- Can be used corded and cordless
- 35+ shaving minutes, 1-hour charge
- Perfect for trimming your sideburns and moustache
- Charging indicator
- 2-in-one nose and ear trimmer
- 2-year guarantee, worldwide voltage and replaceable blades

PHILIPS

Highlights

CloseCut blades



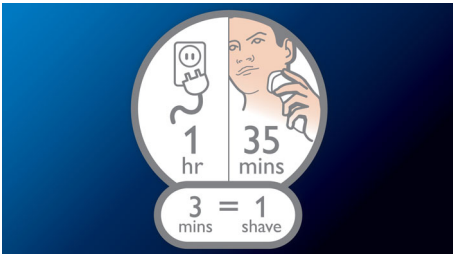
CloseCut blades are precision-engineered to give you a reliably close shave every time. The durable self-sharpening blades don't wear off to ensure that your shave stays effective and fast.

Flex & Float



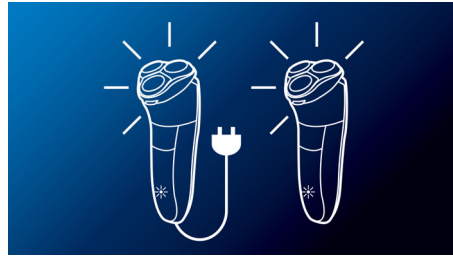
Automatically adjusts to every curve of your face and neck for a smoother shave

35+ shaving minutes



You'll have 35+ minutes of shaving time that's around 14 shaves after 1 hour of charging. Plug it in for 3 minutes and you'll have enough power for one shave.

Corded and cordless use



Can be used corded and cordless

Pop-up trimmer



Complete your look by using the pop-up trimmer. Perfect for maintaining a moustache and trimming sideburns.

Battery Light



Charging indicator

Easy grip for optimal handling



This ergonomically designed grip enables easy handling for a comfortable shave.

Nose and ear trimmer included



The Philips Nosetrimmer series 1000 trims unwanted nose and ear hair with a powerful Chromium steel trimmer. Preventing nicks and cuts, the trimmer's unique Safe-Guard technology ensures a skin-friendly trim.

Built to last



All of our shavers come with a 2-year worldwide guarantee and can adapt to any voltage. The long-lasting blades only need to be replaced after 2 years.

Specifications

Shaving Performance

- Contour-following: Flex & Float System
- Shaving System: CloseCut

Ease of use

- Display: Charging indicator
- Handle: Ergonomic grip & handling
- Operation: Corded & Cordless use

Accessories

- Maintenance: Cleaning brush, Protective cap

- Pop-up trimmer
- Attachments: Nose and ear trimmer

Power

- Run time: 35 min
- Automatic voltage: 100-240 V
- Charging: 1 hour full charge

Service

- Replacement head: Replace every 2 yrs with HQ56



Issue date 2014-12-11

Version: 1.0.1

© 2014 Koninklijke Philips N.V.
All Rights reserved.

Specifications are subject to change without notice.
Trademarks are the property of Koninklijke Philips N.V.
or their respective owners.

www.philips.com