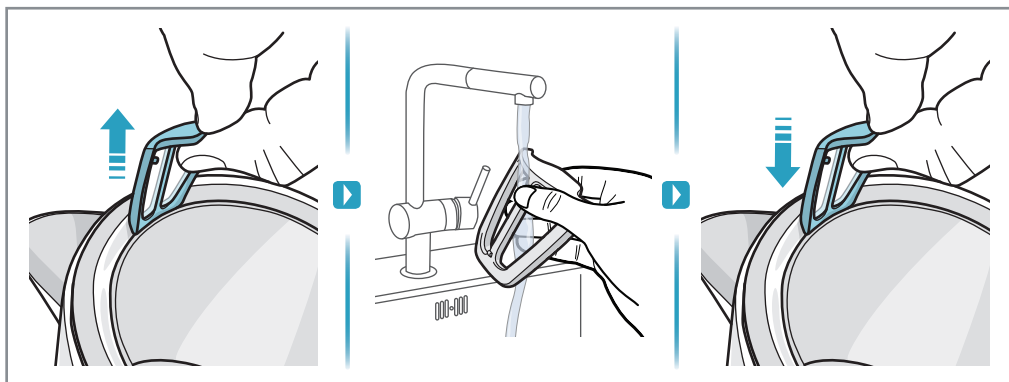
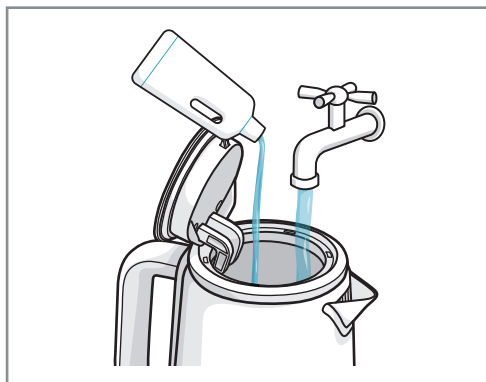
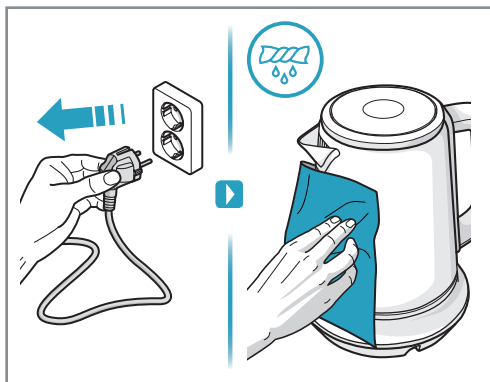


Cleaning



TEMPERATURES

	40°	60°	80°	85°	90°	95°	100°
Baby Milk		Warm Water	Yellow Tea (3min)	Jasmine Tea (3min)	Pu-erh (3min)	Coffee Pour Over	Boiling Water
		Lemon Water	Matcha Tea	Sow Mee (4min)		Instant Coffee	Herbal Tea (5min)
		Honey Water	Green Tea	Silver Needle (4min)			Roolbos (5min) Instant Noodles/soup

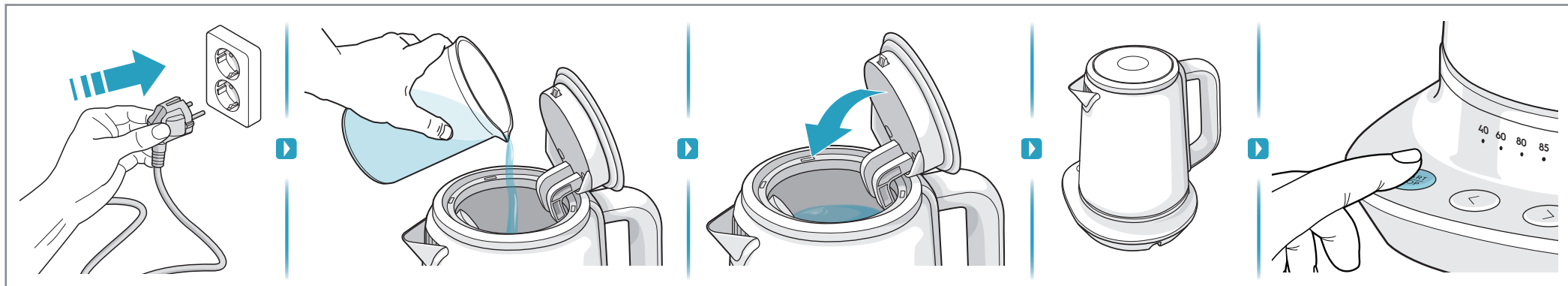
 **Electrolux**

Explore 7 Kettle 1.7L

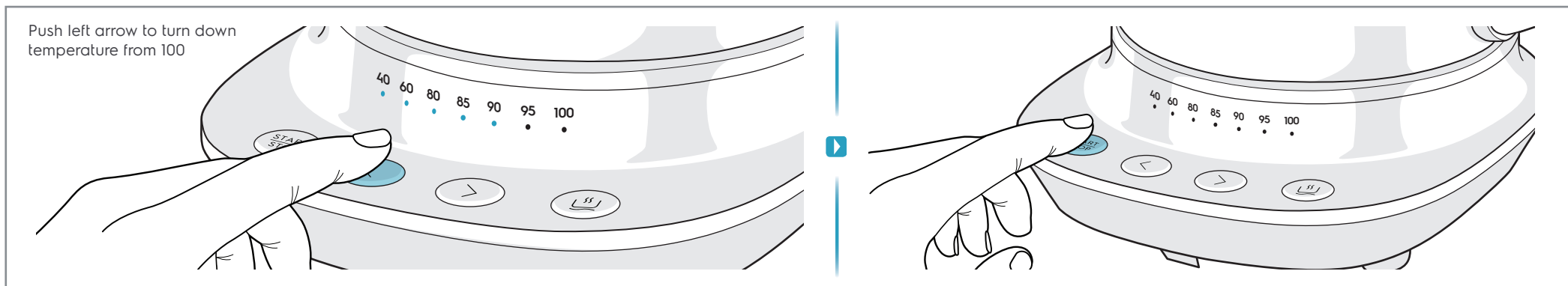
Quick guide



Quick boil



Temperature set



Keep Warm

