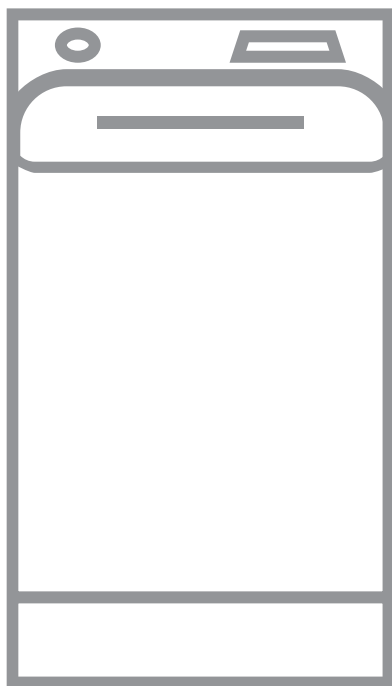


USER MANUAL



CONTENTS

1. SAFETY INFORMATION.....	3
2. SAFETY INSTRUCTIONS.....	4
3. PRODUCT DESCRIPTION.....	6
4. TECHNICAL DATA.....	8
5. INSTALLATION.....	8
6. CONTROL PANEL.....	11
7. PROGRAMME CHART.....	13
8. OPTIONS.....	17
9. SETTINGS.....	19
10. BEFORE FIRST USE.....	20
11. DAILY USE.....	20
12. HINTS AND TIPS.....	24
13. CARE AND CLEANING.....	26
14. TROUBLESHOOTING.....	29
15. CONSUMPTION VALUES.....	31
16. QUICK GUIDE.....	33

DEAR CUSTOMER

Thank you for choosing this Husqvarna-Electrolux product. We have created it to give you impeccable performance for many years, with innovative technologies that help make life simpler – features you might not find on ordinary appliances. Please spend a few minutes reading to get the very best from it.

Visit our website to:



Get usage advice, brochures, trouble shooter, service and repair information:
www.husqvarna-electrolux.se/support



Register your product for better service:
www.husqvarna-electrolux.se




Buy Accessories, Consumables and Original spare parts for your appliance:
www.husqvarna-electrolux.se/shop

CUSTOMER CARE AND SERVICE

Always use original spare parts.

When contacting our Authorised Service Centre, ensure that you have the following data available: Model, PNC, Serial Number.

The information can be found on the rating plate.

 Warning / Caution-Safety information

 General information and tips

 Environmental information

Subject to change without notice.

1. SAFETY INFORMATION

Before the installation and use of the appliance, carefully read the supplied instructions. The manufacturer is not responsible for any injuries or damage that are the result of incorrect installation or usage. Always keep the instructions in a safe and accessible location for future reference.

1.1 Children and vulnerable people safety

- This appliance can be used by children aged from 8 years and above and persons with reduced physical, sensory or mental capabilities or lack of experience and knowledge if they have been given supervision or instruction concerning the use of the appliance in a safe way and understand the hazards involved.
- Children between 3 and 8 years of age and persons with very extensive and complex disabilities shall be kept away from the appliance unless continuously supervised.
- Children of less than 3 years of age should be kept away from the appliance unless continuously supervised.
- Children should be supervised to ensure that they do not play with the appliance.
- Keep all packaging away from children and dispose of it appropriately.
- Keep detergents away from children.
- Keep children and pets away from the appliance when the door is open.
- If the appliance has a child safety device, it should be activated.
- Children shall not carry out cleaning and user maintenance of the appliance without supervision.

1.2 General Safety

- Do not change the specification of this appliance.

- This appliance is intended to be used in household and similar applications such as:
 - staff kitchen areas in shops, offices and other working environments;
 - by clients in hotels, motels, bed & breakfast and other residential type environments;
 - areas for communal use in blocks of flats or in launderettes.
- The appliance maximum load is 6 kg. Do not exceed the maximum load of each programme (refer to the “Programmes” chapter).
- The operating water pressure at the water entry point from the outlet connection must be between 0.5 bar (0.05 MPa) and 8 bar (0.8 MPa).
- The ventilation opening in the base must not be covered by a carpet, mat, or any floor covering.
- The appliance must be connected to the water mains using the new supplied hose sets, or other new hose sets supplied by the Authorised Service Centre.
- Old hose sets must not be reused.
- If the mains power supply cable is damaged, it must be replaced by the manufacturer, its Authorised Service Centre or similarly qualified persons to avoid an electrical hazard.
- Before any maintenance operation, deactivate the appliance and disconnect the mains plug from the socket.
- Do not use high pressure water sprays and/or steam to clean the appliance.
- Clean the appliance with a moist cloth. Use only neutral detergents. Do not use abrasive products, abrasive cleaning pads, solvents or metal objects.

2. SAFETY INSTRUCTIONS

2.1 Installation



The installation must comply with relevant national regulations.

- Remove all the packaging and the transit bolts including rubber bush with plastic spacer.
- Keep the transit bolts in a safe place. If the appliance is to be moved in the

future they must be reattached to lock the drum to prevent an internal damage.

- Always take care when moving the appliance as it is heavy. Always use safety gloves and enclosed footwear.
- Follow the installation instructions supplied with the appliance.
- Do not install or use a damaged appliance.
- Do not install or use the appliance where the temperature can be less than 0°C or where it is exposed to the weather.
- The floor area on which the appliance is to be installed must be flat, stable, heat resistant and clean.
- Make sure that there is air circulation between the appliance and the floor.
- When the appliance is in its permanent position, check if it is levelled correctly with the aid of a spirit level. If it is not, adjust the feet accordingly.
- Do not install the appliance directly above a floor drain.
- Do not spray water on the appliance and do not expose it to excessive humidity.
- Do not install the appliance where the appliance lid cannot be fully opened.
- Do not put a closed container to collect possible water leakage under the appliance. Contact the Authorised Service Centre to ensure which accessories can be used.

2.2 Electrical connection



WARNING!

Risk of fire and electric shock.

- The appliance must be earthed.
- Always use a correctly installed shockproof socket.
- Make sure that the parameters on the rating plate are compatible with the electrical ratings of the mains power supply.
- Do not use multi-plug adapters and extension cables.
- Make sure not to cause damage to the mains plug and to the mains cable. Should the mains cable need to

be replaced, this must be carried out by our Authorised Service Centre.

- Connect the mains plug to the mains socket only at the end of the installation. Make sure that there is access to the mains plug after the installation.
- Do not touch the mains cable or the mains plug with wet hands.
- Do not pull the mains cable to disconnect the appliance. Always pull the mains plug.

2.3 Water connection

- The inlet water shall not exceed 25 °C.
- Do not cause damage to the water hoses.
- Before connection to new pipes, pipes not used for a long time, where repair work has been carried out or new devices fitted (water meters, etc.), let the water flow until it is clean and clear.
- Ensure that there are no visible water leaks during and after the first use of the appliance.
- Do not use an extension hose if the inlet hose is too short. Contact the Authorised Service Centre for the replacement of the inlet hose.
- When unpacking the appliance, it is possible to see water flowing from the drain hose. This is due to the testing of the appliance with the use of water in the factory.
- You can extend the drain hose to maximum 400 cm. Contact the Authorised Service Centre for the other drain hose and the extension.
- Make sure that there is access to the tap after the installation.

2.4 Use



WARNING!

Risk of injury, electric shock, fire, burns or damage to the appliance.

- Follow the safety instructions on the detergent packaging.
- Do not put flammable products or items that are wet with flammable products in, near or on the appliance.

- Do not wash fabrics which are heavily soiled with oil, grease or other greasy substances. It can damage rubber parts of the washing machine. Prewash such fabrics by hand before loading them into the washing machine.
- Make sure that all metal objects are removed from the laundry.

2.5 Service

- To repair the appliance contact the Authorised Service Centre. Use original spare parts only.
- Please note that self-repair or non-professional repair can have safety consequences and might void the guarantee.
- The following spare parts will be available for 10 years after the model has been discontinued: motor and motor brushes, transmission between motor and drum, pumps, shock absorbers and springs, washing drum, drum spider and related ball bearings, heaters and heating elements, including heat pumps, piping and related equipment including hoses, valves, filters and aquastops, printed circuit boards, electronic displays, pressure switches, thermostats and sensors, software and firmware including reset software, door, door hinge and seals, other seals, door locking assembly, plastic peripherals

such as detergent dispensers. Please note that some of these spare parts are only available to professional repairers, and that not all spare parts are relevant for all models.

- Concerning the lamp(s) inside this product and spare part lamps sold separately: These lamps are intended to withstand extreme physical conditions in household appliances, such as temperature, vibration, humidity, or are intended to signal information about the operational status of the appliance. They are not intended to be used in other applications and are not suitable for household room illumination.

2.6 Disposal



WARNING!

Risk of injury or suffocation.

- Disconnect the appliance from the mains electrical and water supplies.
- Cut off the mains electrical cable close to the appliance and dispose of it.
- Remove the door catch to prevent children or pets from becoming trapped in the drum.
- Dispose of the appliance in accordance with local requirements for the disposal of Waste Electrical and Electronic Equipment (WEEE).

3. PRODUCT DESCRIPTION

3.1 Special features

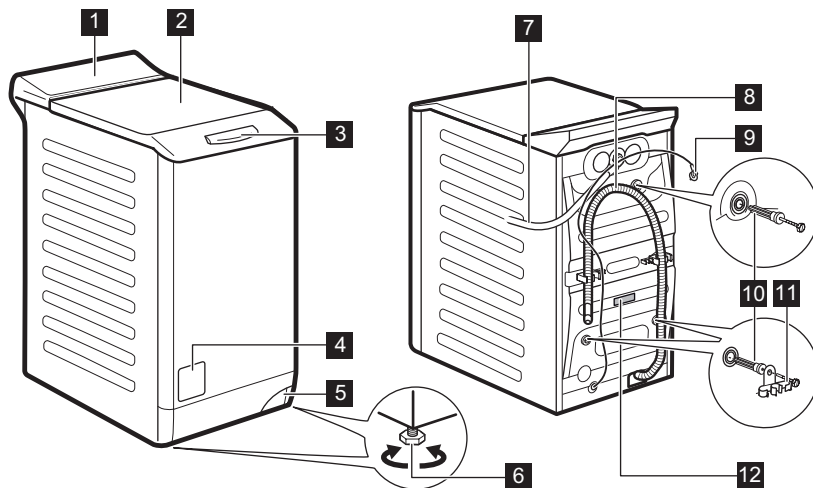
Your new washing machine meets all modern requirements for an effective treatment of laundry with low water, energy and detergent consumption and proper care of fabric.

- The **ProSense System** adjusts automatically the programme duration

to the laundry in the drum to achieve perfect washing results in the minimum possible time.

- Thanks to the **Soft Plus option**, the fabric softener is uniformly spread out in the laundry and deeply penetrates the fabric fibres favouring a perfect softness.

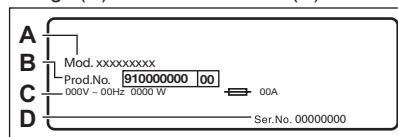
3.2 Appliance overview



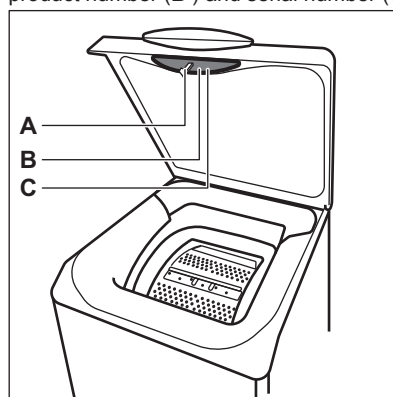
- | | |
|-------------------------------------------|-------------------------|
| 1 Control panel | 8 Drain hose |
| 2 Lid | 9 Mains cable |
| 3 Lid handle | 10 Transit bolts |
| 4 Drain pump filter | 11 Hose support |
| 5 Lever to move the appliance | 12 Rating plate |
| 6 Feet for levelling the appliance | |
| 7 Inlet hose | |

Information for register product.

The **rating plate** reports the model name (A), product number (B), electrical ratings (C) and serial number (D).



The **info label** reports the model name (A), product number (B) and serial number (C).



4. TECHNICAL DATA

Dimension	Width/ Height/ Total depth	39,7 cm /90,3 cm /59,9 cm
Electrical connection	Voltage	230 V
	Overall power	2200 W
	Fuse	10 A
	Frequency	50 Hz
Level of protection against ingress of solid particles and moisture ensured by the protective cover, except where the low voltage equipment has no protection against moisture		IPX4
Water supply pressure	Minimum	0.5 bar (0.05 MPa)
	Maximum	8 bar (0.8 MPa)
Water supply ¹⁾		Cold water
Maximum Load	Cotton	6 kg
Spin Speed	Maximum spin speed	1351 rpm

1) Connect the water inlet hose to a water tap with a 3/4" thread.

5. INSTALLATION

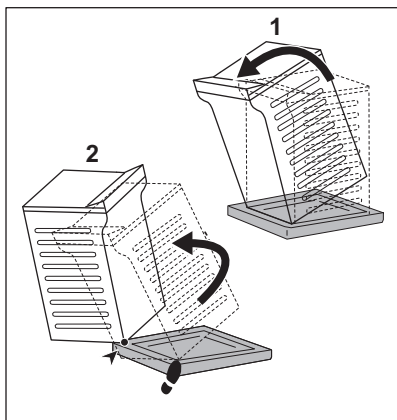


WARNING!

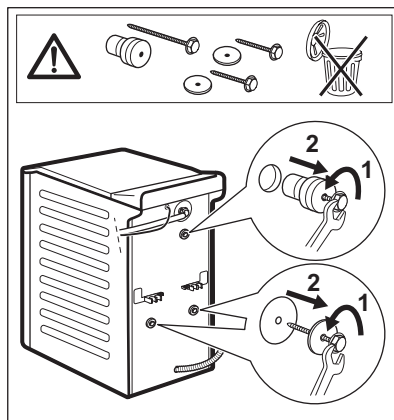
Refer to Safety chapters.

5.1 Unpacking and positioning

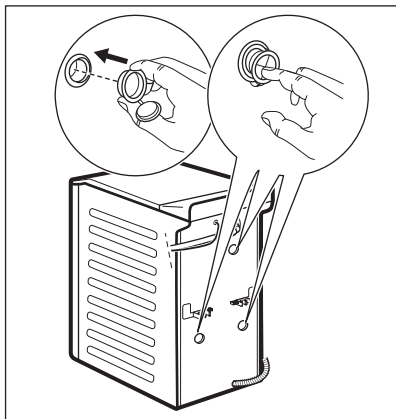
1.



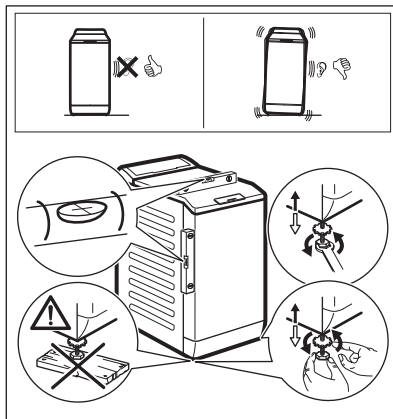
2.



3.



4.



We recommend that you keep the packaging and the transit bolts for any transport of the appliance.

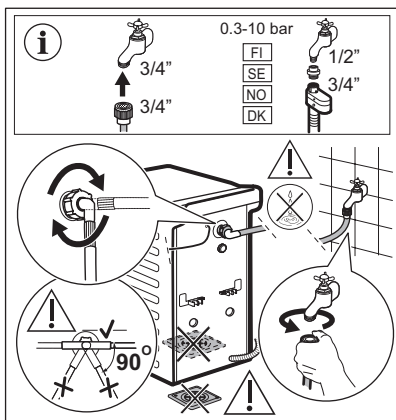
Adjust the appliance correctly to prevent vibration, noise and movement of the appliance when it operates.



WARNING!

Do not put cardboard, wood or equivalent materials below the appliance feet to adjust the level.

5.2 The inlet hose

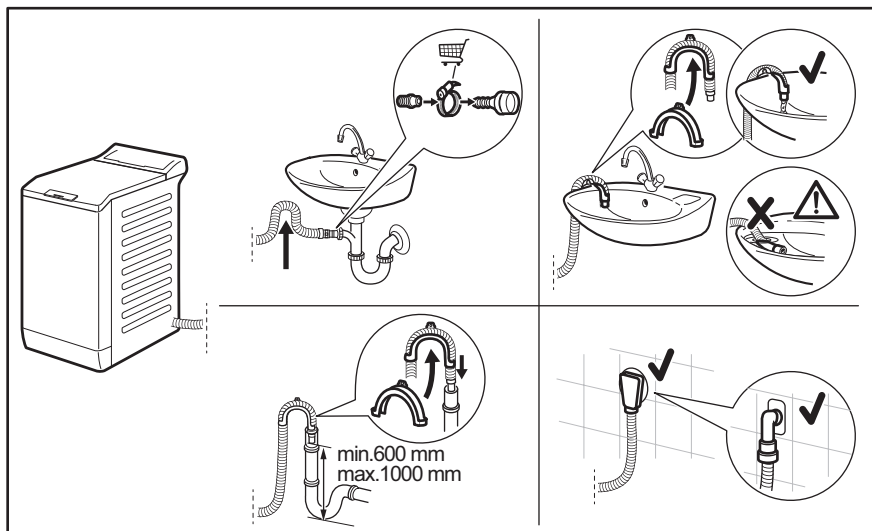


Accessories delivered with the appliance may vary depending on the model.



Make sure there is no damage to hoses and there are no leaks from the couplings. Do not use an extension hose if the inlet hose is too short. Contact the service centre for a replacement inlet hose.

5.3 Water drainage



The drain hose should stay at a height of no less than 600 mm and not more than 1000 mm. You can extend the drain hose to maximum 4000 mm. Contact the authorised service centre for the other drain hose and the extension.

5.4 Electrical connection

At the end of installation you can connect the mains plug to the mains socket.

The rating plate and the 'Technical Data' chapter indicate the necessary electrical ratings. Make sure that they are compatible with the mains power supply.

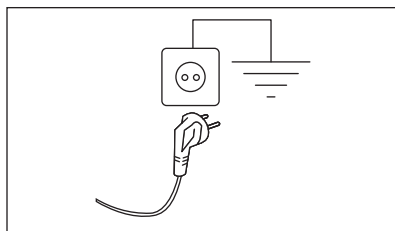
Check that your domestic electrical installation can take the maximum load required, also taking into account any other appliances in use.

Connect the appliance to an earthed socket.

The power supply cable must be easily accessible after installing the appliance.

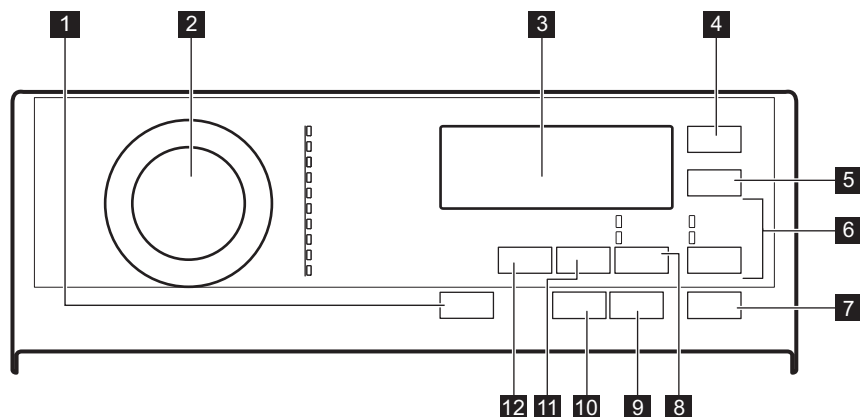
For any electrical work required to install this appliance, contact our Authorised Service Centre.















The manufacturer does not accept any responsibility for damage or injury through failure to comply with the above safety precaution.



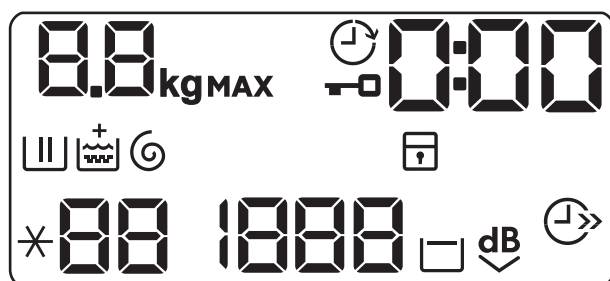
6. CONTROL PANEL


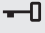











6.1 Control panel description



- | | |
|------------------------------------------------------------------------------------------------------------------------|---------------------------------------------------------------------------------------------------------------------------------------------------------------------------------------------------------------------|
| 1 On/Off push button ① | 8 Stain/Prewash skipping touch button
  |
| 2 Programme dial | • Stain option  |
| 3 Display | • Prewash option  |
| 4 Delay Start touch button  | 9 Anti-allergy touch button  |
| 5 Time Save touch button  | 10 Liquid Detergent touch button  |
| 6 Rinse skipping touch button  | 11 Spin reduction touch button  |
| • Extra Rinse option  | 12 Temperature touch button  |
| • Only Rinse option  | |
| 7 Start/Pause touch button  | |

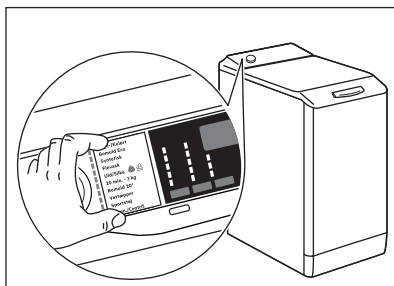
6.2 Display



	The indicator kg flashes during the laundry load estimation.
MAX	Maximum laundry indicator. It flashes when the laundry load exceeds the maximum declared load of the selected programme.
	Lid locked indicator.
	Delay start indicator.
000	The digital indicator can show: <ul style="list-style-type: none"> • Programme duration (e. g. 2:40). • Delay time (e. g. 30' or 2h). • Cycle end (). • Alarm code (E20).
	Washing phase indicator. It flashes during prewash and wash phase.
	Rinsing phase indicator. It flashes during rinse phase.
	Soft Plus option. The + indicator appears above the  when option is set .
	Spinning and draining phase indicator. It flashes during spin and drain phase.
	Child safety lock indicator.
88	Temperature indicator. The - - indicator appears when a cold wash is set.
1888	Spin speed indicator.
- - -	No spin speed indicator. Spin phase is off, the appliance performs only the draining phase.
	Rinse hold indicator.
	Extra silent indicator.
	Time saving indicator.


6.3 Multilingual badges and knob





Adhesive badges in different languages are supplied with the appliance. The desired badge can be glued next to the programme dial.



7. PROGRAMME CHART

Washing programmes

Programme	Default temperature Temperature range	Reference spin speed Spin speed range	Maximum load	Programme description
Eco 40-60	40 °C ¹⁾	1400 rpm 1400-400 rpm	6 kg	White cotton and fast-coloured cotton. Normally soiled items. The energy consumption decreases and the time of the washing programme is extended, ensuring good washing results.
Cottons	40 °C 95 °C - Cold	1400 rpm 1400 - 400 rpm	6 kg	White and coloured cotton heavily and normally soiled cotton items.
Synthetics	40 °C 60 °C - Cold	1200 rpm 1200- 400 rpm	3 kg	Synthetic items or mixed fabric items. Normally soiled items.
Delicates	30 °C 40 °C - Cold	1200 rpm 1200 - 400 rpm	2 kg	Delicate fabrics such as acrylics, viscose and mixed fabrics requiring gentler washing. Normally and lightly soiled items.
 Wool/Silk	40 °C 40 °C - Cold	1200 rpm 1200- 400 rpm	1,5 kg	Machine washable wool, hand washable wool and other fabrics with «hand washing» care symbol ²⁾ .
20min - 3kg	30 °C 40 °C - 30 °C	1200 rpm 1200 - 400rpm	3 kg	Cotton and synthetic items lightly soiled or once worn.

Programme	Default temperature Temperature range	Reference spin speed Spin speed range	Maximum load	Programme description
 Outdoor	30 °C 40 °C - Cold	1200 rpm 1200 -400 rpm	2 kg ³⁾ 1 kg ⁴⁾	<div> Do not use fabric softener and make sure there is no softener residue in the detergent dispenser.</div> <div>Outdoor clothing, technical, sport fabrics, waterproof and breathable jackets, shell jackets with a removable fleece or inner insulation. The recommended laundry load is 2 kg. This programme can also be used as water-repellent restoring cycle, specifically tailored for treating clothes with a hydrophobic coating. To perform the water-repellent restoring cycle, proceed as follows:<ul style="list-style-type: none">• Pour the washing detergent in the compartment .• Pour a special water-repellent restorer for fabric in the drawer compartment for fabric softener .• Reduce the laundry load to 1 kg. To further improve the water repellency restoring action, dry the laundry in a tumble dryer by setting the Outdoor drying programme (if available and if the garment care label permits tumble drying).</div>
Duvet	40 °C 60 °C - Cold	800 rpm 800 - 400 rpm	2 kg	Single synthetic blanket, padded clothes, duvets, down jackets and similar items.
Easy Iron	40 °C 60 °C - Cold	800 rpm 800 rpm - 400 rpm	3 kg	Synthetic items requiring a gentle wash. Normally and lightly soiled items. ⁵⁾

Programme	Default temperature Temperature range	Reference spin speed Spin speed range	Maximum load	Programme description
Spin/Drain	-	1400 rpm 1400 rpm - 400 rpm	6 kg	All fabrics, except woollens and delicate fabrics. To spin the laundry and to drain the water in the drum.

¹⁾ According to Commission Regulation EU 2019/2023, this programme at 40 °C is able to clean normally soiled cotton laundry declared to be washable at 40 °C or 60 °C, together in the same cycle.



For the reached temperature in the laundry, the programme duration and other data, please refer to 'Consumption Values' chapter.

The most efficient programmes in terms of energy consumption are generally those that perform at lower temperatures and longer duration.

2) During this cycle the drum rotates slowly to ensure a gentle wash. It can seem that the drum doesn't rotate or doesn't rotate properly, but this is normal for this programme.

3) Washing programme.

4) Washing programme and waterproofing phase.

5) To reduce creasing, this cycle regulates the water temperature and performs a soft wash and spin phase. The appliance adds some rinses.

Programme options compatibility

[illegible]

OPTIONS	PROGRAMME	Eco 40-60	Cottons	Synthetics	Delicates	Wool/Silk	20min - 3kg	Outdoor	Duvet	Easy Iron	Spin/Drain
Anti-allergy			■								
Time Save ²⁾		■	■	■	■					■	
Delay Start		■	■	■	■	■	■	■	■	■	■
Liquid Detergent		■	■	■	■	■	■	■	■	■	
Soft Plus		■	■	■	■				■	■	

- 1) This option is not available with temperature lower than 40 °C.
- 2) If you set the shortest duration, we recommend that you decrease the load size. It is possible to fully load the appliance, however the washing results can be less satisfactory.

Suitable detergents for washing programmes

Programme	Universal powder ¹⁾	Liquid Uni-versal	Liquid for coloureds	Delicates woollens	Special
Eco 40-60	▲	▲	▲	--	--
Cottons	▲	▲	▲	--	--
Synthetics	▲	▲	▲	--	--
Delicates	--	--	--	▲	▲
Wool/Silk	--	--	--	▲	▲
20min - 3kg	--	▲	▲	--	--
Outdoor	--	--	--	▲	▲
Duvet	--	--	--	▲	▲
Easy Iron	▲	▲	▲	--	--

1) At temperature higher than 60 °C the use of powder detergent is recommended.

▲ = Recommended
-- = Not recommended

7.1 Woolmark Apparel Care - Blue



The wool wash cycle of this machine has been approved by The Woolmark Company for the washing of wool garments labelled as «hand wash» provided that the garments are washed according to the instructions issued by the manufacturer of this washing machine. Follow the garment care label for drying and other laundry instructions. M1145
The Woolmark symbol is a Certification mark in many countries.

8. OPTIONS

8.1 Introduction



The options/functions are not selectable with all washing programmes. Check the compatibility between options/functions and washing programmes in the "Programme Chart". An option/function can exclude another one, in this case the appliance doesn't allow you to set the incompatible options/functions together. Make sure the screen and touch buttons are always clean and dry.

8.2 On/Off ①

Pressing this button for a few seconds allows to activate or deactivate the appliance. Two different tunes sound while switching the appliance on or off.

As the Stand-by function automatically deactivates the appliance to decrease the energy consumption in a few cases, you may need to activate the appliance again.

For more details, refer to Stand-by paragraph in Daily Use chapter.

8.3 Temperature 🌡️

When you select a washing programme, the appliance automatically proposes a default temperature.

Set this option to change the default temperature.

The indicator +- = cold water of the set temperature comes on (the appliance does not heat the water).

8.4 Spin 🌀

When you set a programme, the appliance automatically sets the maximum spin speed allowed.

Touch repeatedly this button to:


- **Decrease the spin speed.**




The display shows only the spin speeds available for the set programme.

- **Activate the Rinse Hold option.**

The final spin is not performed. The water of the last rinse is not drained out to prevent the fabrics from creasing. The washing programme ends with water in the drum.

The display shows the indicator . The lid stays locked and the drum turns regularly to reduce creasing. You must drain the water to unlock the lid.


If you touch the Start/Pause  button, the appliance performs the spinning phase and drains the water.





The appliance empties the water out automatically after 18 hours approximately.

- **Activate the Extra Silent option.**

The intermediate and the final spinning phases are suppressed and the programme ends with water in the drum. This helps to reduce creasing.


The display shows the indicator . The lid stays locked. The drum turns regularly to reduce creasing. You must drain the water to unlock the lid. As the programme is very quiet, it is suitable for use at night time when cheaper electricity tariffs are available. In some programmes the rinses are performed with more water.


If you touch the Start/Pause  button, the appliance performs the only draining phase.


-  The appliance empties the water out automatically after 18 hours approximately.


8.5 Stain/Prewash

Press this button repeatedly to activate one of the two options.


- **Stain** 

Select this option to add an anti-stain phase to a programme in order to treat heavily soiled or stained laundry with stain remover. Pour the stain remover into compartment . The stain remover will be added in the appropriate phase of the washing programme.

-  This option can increase the programme duration and is not available with a temperature lower than 40 °C.

- **Prewash** 


Use this option to add a prewash phase at 30 °C before the washing phase. This option is recommended for heavily soiled laundry, especially if containing sand, dust, mud and other solid particles.

-  This option can increase the programme duration.


The corresponding indicator above the touch button illuminates.


8.6 Rinse

With this button you can select one of the following options:

- **Option Extra Rinse** 

This option adds a few rinses according to the selected washing programme. Use this option for persons allergic to detergent residues and in areas where the water is soft.

-  This option increases slightly the programme duration.

- **Skipping wash phase - Only Rinse** 

The appliance performs only the rinsing phase, the spinning and the draining phases of the selected programme.

The related indicator comes on.



8.7 Time Save

With this option you can decrease the programme duration.

- If your laundry is normally or lightly soiled, it may be advisable to shorten the washing programme. Touch this button **once** to decrease the duration.
- In case of smaller load, touch this button **twice** to set an extra quick programme.

The display shows the indicator .

8.8 Anti-allergy

Set this option with white Cottons items programme. When the option is selected, neither the temperature or the cycle time can be changed. Option Time Save  and Extra silent  are not available.

The corresponding indicator above the touch button illuminates.

This option removes micro-organisms thanks to a washing phase with the temperature maintained above 60°C for several minutes. This helps in removing germs, bacteria, micro-organism and particles. The addition of vapour together with an additional rinsing phase ensures

a proper removal of detergent residues and pollens/allergenic items, making it suitable for delicate and sensitive skins.

8.9 Liquid Detergent

Press this button to adapt the cycle if you use a liquid detergent.

The related indicator comes on.





CAUTION!

Make sure that the liquid/powder switch on the detergent compartment to the correct position. Refer to 'Liquid or powder detergent' chapter.


8.10 Delay Start

With this option you can delay the start of a programme in a more convenient time.

Touch the button repeatedly to set the required delay. The time increases by steps of 30 minutes up to 90' and from 2 hours up to 20 h.




After touching the Start/Pause  button, the display shows the indicator  and the selected delay time and the appliance begins the countdown.

8.11 Start/Pause

Touch the Start/Pause  button to start, pause the appliance or interrupt a running programme.

9. SETTINGS

9.1 Acoustic signals





To deactivate the acoustic signals when the programme is completed touch the   and the  buttons simultaneously for about 3 seconds.




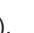

The acoustic signals, they continue operate when the appliance has a malfunction.

9.2 Child Lock

With this option you can prevent that the children play with the control panel.

- To **activate/deactivate** this option, touch the   and the  buttons simultaneously until the indicator  **comes on/goes off** on the display.

You can activate this option:

- After you touch the Start/Pause  button: all the buttons and the programme dial are deactivated (except On/Off  button).
- Before you touch the Start/Pause  button: the appliance cannot start.

The appliance keeps the selection of this option after you switch it off.





9.3 Soft Plus

Set the Soft Plus option to optimise the fabric softener distribution and improve the fabric softness.

It is suggested when you use the fabric softener.




This option increases slightly the programme duration.

To **activate/deactivate** this option touch the  button and the  button simultaneously until the  indicator **comes on/goes off** above the  indicator.

9.4 Permanent Extra Rinse

With this option you can permanently have an extra rinse when you set a new programme.

- To **activate/deactivate** this option touch the  button and the   . The corresponding indicator next the touch button illuminates.

10. BEFORE FIRST USE



During installation or before first use you may observe some water in the appliance. This is residual water left in the appliance after a full functional test in the factory to ensure the appliance is delivered to customers in perfect working order and is no cause for concern.


1. Connect the mains plug to the mains socket.

2. Open the water tap.
3. Put 2 litre of water in the detergent compartment for washing phase. This activates the drain system.
4. Put a small quantity of detergent in the compartment for washing phase.
5. Set and start a programme for cotton at the highest temperature without laundry.

This removes all possible dirt from the drum and the tub.

11. DAILY USE

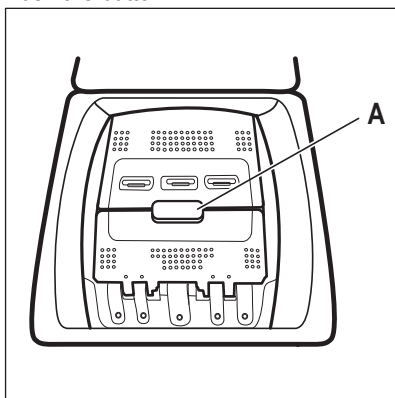
11.1 Activating the appliance

1. Connect the mains plug to the mains socket.
2. Open the water tap.
3. Press button On/Off  to activate the appliance.

A short tune sounds.

11.2 Loading the laundry

1. Open the appliance lid.
2. Push the button **A**.



The drum opens automatically.

3. Put the laundry in the drum, one item at a time.
 4. Shake the items before you put them in the appliance.
- Make sure not to put too much laundry in the drum.
5. Close the drum and the lid.



CAUTION!

Before you close the lid of your appliance, make sure that you close the drum correctly.

11.3 Detergent compartments. Using detergent and additives

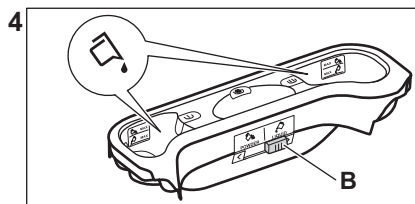
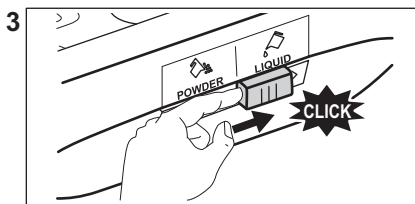
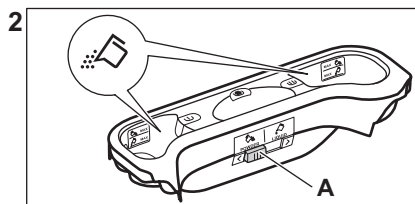
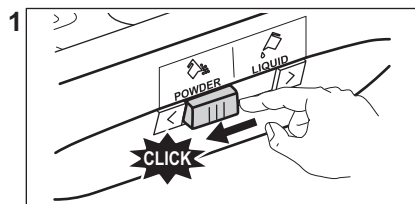
1. Measure out specified detergents for washing machine the detergent and the fabric conditioner.
2. Put the detergent and the fabric conditioner into the proper compartments.



Always obey the instructions that you find on the packaging of the detergent products.

	<p>Detergent compartment for pre-wash phase.</p> <p>The marks MAX are the maximum levels of the quantity of detergent (powder or liquid). When you set a programme with a stain, add detergent (powder or liquid).</p>
	<p>Detergent compartment for washing phase.</p> <p>The marks MAX are the maximum levels of the quantity of detergent (powder or liquid).</p>
	<p>Compartment for liquid additives (fabric conditioner, starch).</p> <p>The mark M is the maximum level for the quantity liquid additives.</p>
	<p>Flap for powder or liquid detergent.</p>

11.4 Liquid or powder detergent




- Position **A** for powder detergent (factory setting).
- Position **B** for liquid detergent.

**When you use the liquid detergent:**

- Do not use gelatinous or thick liquid detergents.
- Do not put more liquid than the maximum level.
- Do not set the delay start function.


11.5 Setting a programme

1. Turn the programme knob and set the programme:
 - The related programme indicator comes on.
 - The indicator of Start/Pause  flashes.
 - The display shows: the default temperature, the spin speed, the indicators of the programme phases and the programme duration.
2. If necessary, change the temperature, the spin speed, the cycle duration, or add available options. When you activate an option, the indicator of the set option comes on.



In case a selection is **not possible**, no indicator comes on and an acoustic signal sounds.


11.6 Starting a programme without the delay start

Press button Start/Pause  to start the programme.

The relevant indicator stops to flash and stays on.

On the display the indicator of the phase is operation starts to flash.

The programme starts, the lid is locked.

The display show the indicator .



The drain pump can operate for a short time when the appliance fills water.



11.7 Cycle time recalculation




After approximately 15 minutes from the start of the programme:

- The appliance adjusts automatically the cycle time to the laundry you have put in the drum to have perfect washing results in the minimum necessary time.
- The display shows the new time value.

11.8 Starting a programme with the delay start





1. Press button Delay Start  again and again until the display shows the number of minutes or hours of delay. The related indicator comes on.
2. Press button Start/Pause . The appliance starts the countdown of the delay start. When the countdown is completed, the programme starts automatically.



Before you press button Start/Pause  to start the appliance, you can cancel or change the set of the delay start.



11.9 Cancelling the delay start

To cancel the delay start:



1. Press button Start/Pause  to set the appliance to pause. The related indicator flashes.
2. Press button Delay Start  repeatedly until the display shows .
3. Press button Start/Pause  again to start the programme immediately.


11.10 Interrupting a programme and changing a option

You can change only some options before they operate.


1. Press button Start/Pause . The related indicator flashes.
2. Change the option set.
3. Press the button Start/Pause  again. The programme continues.



11.11 Cancelling a running programme


1. Press button On/Off  to cancel the programme and to deactivate the appliance.
 2. Press button On/Off  again to activate the appliance.
- Now, you can set a new washing programme.

 Before starting the new programme the appliance could drain the water. In this case, make sure that the detergent is still in the detergent compartment, if not fill the detergent again.

11.12 The ProSense System load detection

After touching the Start/Pause  button:

1. The ProSense System starts the laundry load detection to calculate the real programme duration. The indicator **kg** and the time dots  flash.
2. After about 15 minutes the display shows the new programme duration: the indicator **kg** goes off and the time dots  stops flashing. The appliance adjusts automatically the programme duration to the load to achieve perfect washing results in the minimum possible time. The programme duration could increase or decrease.

 The ProSense System detection is carried out with complete washing programmes only (no skipping phase selected).




The ProSense System is not available with all programmes such as :Wool/ Silk, Rinse, SpinDrain, and programmes with short cycles.

11.13 Opening the door when the programme operates



CAUTION!

If the temperature and level of the water in the drum are too high, the door lock indicator  stays on and you cannot open the door.


To open the door proceed as follows:

1. Press the button On/Off for some seconds to deactivate the appliance.
2. Wait for some minutes and then open carefully the appliance door.
3. Close the appliance door.
4. Activate the appliance and set the programme again.

11.14 Opening the door when the delay start is active

While the delay start operates, the appliance door is locked.



To open the appliance door:

1. Press button Start/Pause.
- The door lock indicator  goes off.
2. Open the appliance door.
 3. Close the door and press button Start/Pause.


The delay start continues.

11.15 End of cycle

When the programme has finished, the appliance stops automatically. The acoustic signal operates (if it is active).

In the display  comes on and the lid locked indicator  goes off.

The indicator of Start/Pause  button goes off.

1. Press button On/Off  to deactivate the appliance.

After five minutes from the end of the programme, the energy saving function automatically deactivates the appliance.




When you activate the appliance again, the display show the end of the last set programme. Turn the programme knob to set a new cycle.

2. Remove the laundry from the appliance.
3. Make sure that the drum is empty.
4. Keep the door ajar, to prevent mildew and odours




11.16 Draining water out after end of cycle

The washing programme is completed, but there is water in the drum:

The drum turns regularly to prevent the creases in the laundry.

The lid lock indicator  is on. The lid stays locked.

You must drain the water to open the lid:

1. If necessary, decrease the spin speed.
2. Press the Start/Pause  button. The appliance drains the water and spins.
3. When the programme is completed and the door lock indicator  goes off, you can open the door .
4. Press On/Off  some seconds to deactivate the appliance.



The appliance drains and spins automatically after approximately 18 hours.

12. HINTS AND TIPS

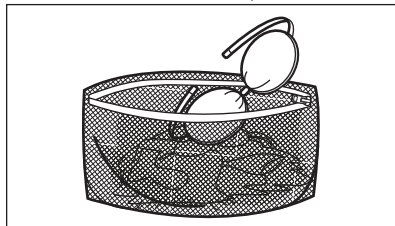


WARNING!

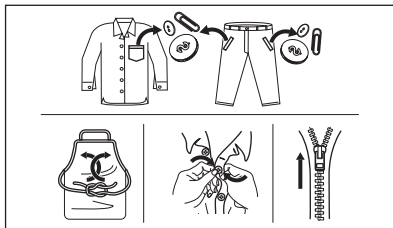
Refer to Safety chapters.

12.1 The laundry load

- Divide the laundry into: white, coloured, synthetics, delicates and wool.
- Follow the washing instructions on the laundry care labels.
- Do not wash white and coloured items together.
- Some coloured items can discolour with the first wash. We recommend that you wash them separately for the first couple of times.
- Turn multilayered fabrics, wool and items with printed illustrations inside out.
- Pre-treat stubborn stains.
- Wash stubborn stains with a special detergent.
- Be careful with curtains. Remove the hooks and put the curtains in a washing bag or pillowcase.
- A very small load can cause balance problems with the spin phase leading to excessive vibration. If this occurs:
 - a. interrupt the programme and open the door (refer to "Daily Use" chapter);
 - b. manually redistribute the load so that the items are spaced evenly around the tub;
 - c. press the Start/Pause button. The spin phase continues.
- Button up pillowcases, close zippers, hooks and poppers. Tie up belts, cords, shoelaces, ribbons and any other loose elements.
- Do not wash laundry without hems or with cuts. Use a washing bag to wash small and/or delicate items (e.g. underwired bras, belts, tights, shoelaces, ribbons, etc.).



- Empty pockets and unfold the items.



12.2 Stubborn stains

For some stains, water and detergent is not sufficient.

We recommend that you pre-treat these stains before you put the items in the appliance.

Special stain removers are available. Use the special stain remover that is applicable to the type of stain and fabric.

12.3 Detergent type and quantity

The choice of detergent and use of correct quantities not only affects your wash performance, but also helps to avoid waste and protect the environment:

- Use only detergents and other treatments specially made for washing machines. First, follow these generic rules:
 - powder detergents for all types of fabric, excluding delicate. Prefer powder detergents containing bleach for whites and laundry sanitization,
 - liquid detergents, preferably for low temperature wash programmes (60 °C max) for all types of fabric, or special ones for woollens only.
- The choice and quantity of detergent will depend on: type of fabric (delicates, woollens, cottons, etc), the colour of clothes, size of the load, degree of soiling, wash temperature and hardness of the water used.
- Follow the instructions that you find on packaging of the detergents or other treatments without exceeding the indicated maximum level (**MAX**).
- Do not mix different types of detergents.

- Use less detergent if:
 - you are washing a small load,
 - the laundry is lightly soiled,
 - there is large amounts of foam during washing.
- When using detergent tabs or pods, always put them inside the drum, not in the detergent dispenser.

Insufficient detergent may cause:

- unsatisfactory washing results,
- the wash load to turn grey,
- greasy clothes,
- mould in the appliance.

Excessive detergent may cause:

- sudsing,
- reduced washing effect,
- inadequate rinsing,
- a greater impact for the environment.

12.4 Ecological hints

To save water, energy and to help protect the environment, we recommend that you follow these tips:

- **Normally soiled laundry** may be washed **without prewash** in order to save detergent, water and time (the environment is protected too!).
- Loading the appliance to the **maximum capacity indicated for each programmes helps to reduce energy and water consumption**.
- With adequate pre-treatment, stains and limited soiling can be removed; the laundry can then be washed at a lower temperature.
- To use the correct quantity of detergent, refer to the quantity suggested by the detergent producer and check the water hardness of your domestic system. Refer to 'Water hardness'.
- Set the **maximum possible spin speed** for the selected washing programme **before drying your laundry in a tumble dryer**. This will save energy during drying!

12.5 Water hardness

If the water hardness in your area is high or moderate, we recommend that you use a water softener for washing machines. In areas where the water hardness is soft it is not necessary to use a water softener.

To find out the water hardness in your area, contact your local water authority.

Use the correct quantity of water softener. Follow the instructions that you find on the packaging of the product.

13. CARE AND CLEANING



WARNING!

Refer to Safety chapters.

13.1 Periodic cleaning schedule

Periodic cleaning helps to extend the life of your appliance.

After each cycle, keep the door and the detergent dispenser slightly ajar to get air circulation and dry the humidity inside the appliance: this will prevent mildew and odours.

If the appliance is not used for a long time: close the water tap and unplug the appliance.

Indicative periodic cleaning schedule:

Descaling	Twice a year
Maintenance wash	Once a month
Clean lid seal	Every two months
Clean drum	Every two months
Clean detergent dispenser	Every two months
Clean drain pump filter	Twice a year
Clean the inlet hose and the valve filter	Twice a year

The following paragraphs explain how you should clean each part.

13.2 Removing foreign objects



Make sure that pockets are empty and all loose elements are tied up before running your cycle. Refer to 'The laundry load' in 'Hints and tips'.

Remove any foreign objects (such as metal clip, buttons, coins, etc) that you may find in the filters and the drum. Refer to 'Cleaning the drum', 'Cleaning the drain pump' and 'Cleaning the inlet hose and the valve filter' paragraphs. If necessary, please contact the Authorised Service Centre.

13.3 External cleaning

Clean the appliance with mild soap and warm water only. Fully dry all the surfaces. Do not use a scouring pads or any scratching material.



CAUTION!

Do not use alcohol, solvents or chemical products.



CAUTION!

Do not clean the metal surfaces with chlorine-based detergent.

13.4 Descaling



If the water hardness in your area is high or moderate, we recommend that you use a water descaling product for washing machines.

Regularly examine the drum to check for limescale.

Regular detergents already contain water softening agents, but we recommend to run a cycle with an empty drum and a descaling product occasionally.



Always follow the instructions that you find on the packaging of the product.

13.5 Maintenance wash

With the low temperature programmes it is possible that some detergent stays in

the drum. Perform a maintenance wash regularly. To do this:

- Remove all laundry from the drum.
- Select the cotton programme with the highest temperature with a small quantity of detergent.

13.6 Lid seal

Regularly examine the seal and remove all objects from the inner part. Clean it when needed, using ammonia cream cleanser agent without scratching the seal surface.

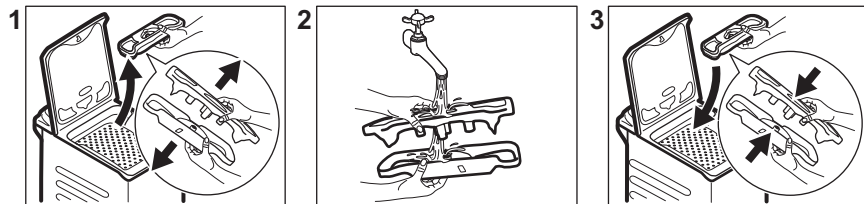


Always obey the instructions that you find on the packaging of the product.

13.7 Cleaning the drum

Regularly examine the drum to prevent rust particles.

13.8 Cleaning the detergent dispenser



13.9 Cleaning the drain filter

Regularly check the drain pump filter and make sure that it is clean.

Clean the drain pump filter if:

- The appliance does not drain the water.
- The drum does not turn.
- The appliance makes an unusual noise because of the blockage of the drain pump.
- The display shows the alarm code

E20

For a complete cleaning:

1. Clean the drum with special products for stainless steel.



Always follow the instructions that you find on the packaging of the product.

2. Run a short cotton programme at high temperature or use if is available programme Machine Clean. Add a small quantity of powder detergent into empty drum, in order to rinse out any left residues.

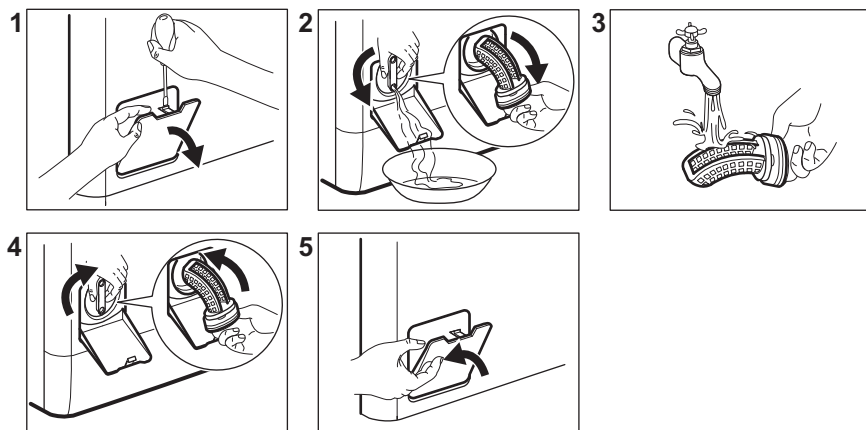


WARNING!

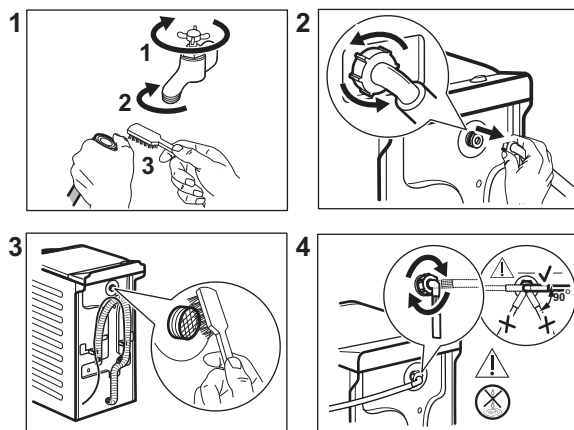
- Disconnect the mains plug from the mains socket.
- Do not remove the filter while the appliance operates.
- Do not clean the pump if the water in the appliance is hot. Wait until the water cools down .

Always keep a rag nearby to dry up any water spillages when removing the filter.

Proceed as follows to clean the pump:



13.10 Cleaning the inlet hose and the valve filter



13.11 Emergency drain

If the appliance cannot drain the water, carry out the same procedure, described in 'Cleaning the drain pump' paragraph. If necessary, clean the pump.

When you drain the water with the emergency drain procedure, you must activate the drain system again:

1. Put 2 litres of water in the main wash compartment of the detergent dispenser.
2. Start the programme to drain the water.

13.12 Frost precautions

If the appliance is installed in an area where the temperature can reach values around 0° C or drop below, remove the remaining water from the inlet hose and the drain pump.

1. Disconnect the mains plug from the mains socket.
2. Close the water tap.
3. Put the two ends of the inlet hose in a container and let the water flow out of the hose.
4. Empty the drain pump. Refer to the emergency drain procedure.

5. When the drain pump is empty, install the inlet hose again.


WARNING!

Make sure that the temperature is higher than 0 °C before you use the appliance again.
The manufacturer is not responsible for damages caused by low temperatures.

14. TROUBLESHOOTING


WARNING!

Refer to Safety chapters.

14.1 Alarm Codes and Possible failures

The appliance does not start or it stops during operation. First try to find a solution to the problem (refer to the tables).


WARNING!

Deactivate the appliance before carrying out any check.


With some problems, the display shows an alarm code and the Start/Pause ►|| button may flash continuously:

Problem	Possible solution
E 10 The appliance does not fill with water properly.	<ul style="list-style-type: none"> • Make sure that the water tap is open. • Make sure that the pressure of the water supply is not too low. For this information, contact your local water authority. • Make sure that the water tap is not clogged. • Make sure that the inlet hose has no kinks, damages or bends. • Make sure that the connection of the water inlet hose is correct. • Make sure that the filter of the inlet hose and the filter of the valve are not clogged. Refer to 'Care and cleaning'.
E20 The appliance does not drain the water.	<ul style="list-style-type: none"> • Make sure that the sink spigot is not clogged. • Make sure that the drain hose has no kinks or bends. • Make sure that the drain filter is not clogged. Clean the filter, if necessary. Refer to "Care and cleaning". • Make sure that the connection of the drain hose is correct. • Set the drain programme if you set a programme without drain phase. • Set the drain programme if you set an option which ends with water in the tub.

E91 No communication between electronic elements of the appliance.	<ul style="list-style-type: none"> The programme was not finished properly or the appliance stopped too early. Switch the appliance off and on again. If the alarm code appears again, contact the Authorised Service Centre.
EHO The mains supply is unstable.	<ul style="list-style-type: none"> Wait until mains supply is stable.
EFO The anti-flood device is on.	<ul style="list-style-type: none"> Disconnect the appliance and close the water tap. Contact the Authorised Service Centre.

If the display shows other alarm codes, deactivate and activate the appliance. If the problem continues, contact the Authorised Service Centre.

In case of different problem with the washing machine check the table below for possible solutions.

Problem	Possible solution
The programme does not start.	<ul style="list-style-type: none"> Make sure that the mains plug is connected to the mains socket. Make sure that the appliance lid and drum door are closed. Make sure that there is no damaged fuse in the fuse box. Make sure that the Start/Pause  has been touched. If the delay start is set, cancel the setting or wait for the end of countdown. Deactivate the Child Lock function if it is on. Check the position of the knob on the selected programme.
The appliance fills with water and drains immediately.	<ul style="list-style-type: none"> Make sure that the drain hose is in the correct position. The hose may be positioned too low. Refer to "Installation instruction".
The spin phase does not operate or the washing cycle lasts longer than usual.	<ul style="list-style-type: none"> Set the spin programme. Make sure that the drain filter is not clogged. Clean the filter, if necessary. Refer to "Care and cleaning". Adjust manually the items in the tub and start the spin phase again. This problem may be caused by balance problems.
There is water on the floor.	<ul style="list-style-type: none"> Make sure that the couplings of the water hoses are tight and there is not water leakages. Make sure that the water inlet hose and the drain hose have no damages. Make sure you use the correct detergent and the correct quantity of it.

Problem	Possible solution
You cannot open the appliance lid.	<ul style="list-style-type: none"> • Make sure that a washing programme that ends with water in tub, has not been selected. • Make sure that the washing programme is finished. • Set the drain or the spin programme if there is water in the drum. • Make sure that the appliance receives electrical power. • This problem may be caused by a failure of the appliance. Contact the Authorised Service Centre.
The appliance makes an unusual noise and vibrates.	<ul style="list-style-type: none"> • Make sure the levelling of the appliance is correct. Refer to "Installation instruction". • Make sure that the packaging and/or the transit bolts are removed. Refer to "Installation instruction". • Add more laundry in the drum. The load may be too small.
The programme duration increases or decreases during programme execution.	<ul style="list-style-type: none"> • The ProSense System is able to adjust the programme duration according to the type and the laundry load size. Refer to "The ProSense System load detection" in "Daily Use" chapter.
The washing results are not satisfactory.	<ul style="list-style-type: none"> • Increase the detergent quantity or use a different detergent. • Use special products to remove the stubborn stains before you wash the laundry. • Make sure that you set the correct temperature. • Decrease the laundry load.
Too much foam in the drum during the washing cycle.	<ul style="list-style-type: none"> • Reduce the quantity of detergent.
After the washing cycle, there are some detergent residues in the dispenser drawer.	<ul style="list-style-type: none"> • Make sure that the flap is in the correct position. • Make sure you have used the detergent dispenser according the indications given in this user manual.

After the check, activate the appliance. The programme continues from the point of interruption.
 If the problem occurs again, contact the Authorised Service Centre.
 The necessary data for the service centre are on the rating plate.

15. CONSUMPTION VALUES

15.1 Introduction



See the web link www.theenergylabel.eu for detailed information about Energy Label.



The QR code on the energy label supplied with the appliance provides a web link to the information related to the performance of the appliance in the EU EPREL database. Keep the energy label for reference together with the user manual and all other documents provided with this appliance. It is also possible to find the same information in EPREL using the link <https://eprel.ec.europa.eu> and the model name and product number that you find on the rating plate of the appliance. Refer to 'Product description' chapter for the position of the rating plate.

15.2 Legend

kg	Laundry load.	h:mm	Programme duration.
kWh	Energy consumption.	°C	Temperature in the laundry.
Litres	Water consumption.	rpm	Spin speed.
%	Remaining moisture at the end of spinning phase. The higher is the spin speed, the higher is the noise and the lower is the remaining moisture.		



Values and programme duration may differ depending on different conditions (e.g. room temperature, water temperature and pressure, load size and type of laundry, supply voltage) and also if you change the default setting of a programme.

15.3 According to Commission Regulation Eu 2019/2023

Eco 40-60 programme	kg	kWh	Litres	h:mm	%	°C	rpm¹⁾
Full load	6	0.940	47	3:17	53	47	1351
Half load	3	0.518	37	2:35	53	39	1351
Quarter load	1,5	0.260	29	2:35	54	25	1351

¹⁾ Maximum spin speed.

Power consumption in different modes

Off (W)	Stand-by (W)	Delay start (W)
0.50	0.50	4.00
Time to Off/Standby mode is 15 minutes maximum.		

15.4 Common programmes

i These values are indicative only.

Programme	kg	kWh	Litres	h:mm	%	°C	rpm ¹⁾
Cottons ²⁾ 90°C	6	2.35	85	4:05	52	85	1400
Cottons 60°C	6	1.75	80	3:50	52	55	1400
Cottons ³⁾ 20°C	6	0.30	80	2:50	52	20	1400
Synthetics 40°C	3	0.60	50	2:10	35	40	1200
Delicates ⁴⁾ 30°C	2	0.30	50	1:00	35	30	1200
Wool/Silk 30°C	1,5	0.20	45	1:05	30	30	1200

1) Reference indicator of the spin speed.

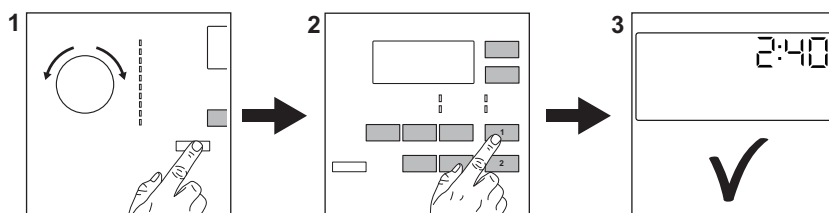
2) Suitable for washing heavily soiled textiles.

3) Suitable for washing lightly soiled cottons, synthetic and mixed fabrics.

4) It also performs as quick washing cycle for lightly soiled laundry.

16. QUICK GUIDE

16.1 Daily use




Connect the mains plug to the mains socket.

Open the water tap.

Load the laundry.

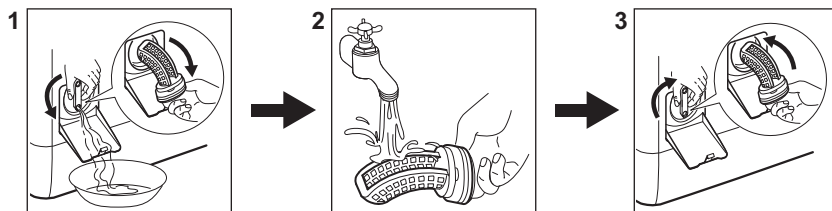
Pour the detergent and other treatment in the proper compartment of the detergent dispenser.

1. Push the **On/Off** **i** button to turn the appliance on. Turn the programme dial to set the desired programme.

2. Set the desired options (1) by means of the corresponding touch buttons. To start the programme, touch the **Start/Pause**  (2) button.
3. The appliance starts.
At the end of the programme, remove the laundry.



Push the **On/Off**  button to turn the appliance off.

16.2 Cleaning the drain pump filter



Clean the filter regularly and, especially, if the alarm code **E20** appears on the display.

16.3 Programmes

Programmes	Load	Product description
Eco 40-60	6 kg	White and coloured cottons. Normally soiled garments.
Cottons	6 kg	White cotton and coloured cotton.
Synthetics	3 kg	Synthetic items or mixed fabric items.
Delicates	2 kg	Delicate fabrics such as acrylics, viscose, polyester items.
 Wool/Silk	1,5 kg	Machine washable wool, hand washable wool and delicates.
20min - 3kg	3 kg	Cotton and synthetic lightly soiled items or once worn items.
Outdoor 	2 kg ¹⁾ 1 kg ²⁾	Modern outdoor sporting garments.
Duvet	2 kg	Single synthetic blanket, bedspread, duvet.
Easy Iron	3 kg	Synthetic items requiring a gentle wash. Normally and lightly soiled items. ³⁾


Programmes	Load	Product description
Spin/Drain	6 kg	All fabrics, except woollens and very delicate fabrics. Programme for spinning and draining the water.

1) Washing programme.

2) Washing programme and waterproofing phase.

3) To reduce creasing, this cycle regulates the water temperature and performs a soft wash and spin phase. The appliance adds some rinses.

17. ENVIRONMENTAL CONCERNS

Recycle materials with the symbol . Put the packaging in relevant containers to recycle it. Help protect the environment and human health by recycling waste of electrical and electronic appliances. Do not dispose of

appliances marked with the symbol  with the household waste. Return the product to your local recycling facility or contact your municipal office.

www.husqvarna-electrolux.se/shop



135997790-A-122021

