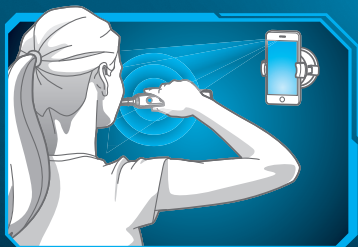
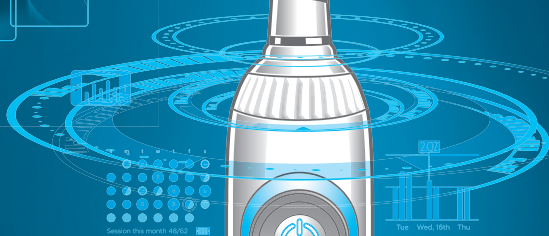
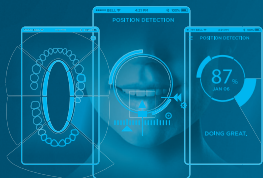


Oral-B®

GENIUS

designed by BRAUN



Download on the
App Store

ANDROID APP ON
Google play

Bluetooth®



DE	AT	00 800 27 28 64 63
CH		0844 - 88 40 10
UK		0 800 731 1792
IE		1 800 509 448
FR		0 800 944 803 (service et appel gratuits)
BE		0 800 14 592
LU		800 21172
ES		900 814 208
PT		808 20 00 33
IT		800 124 600
NL		0800-445 53 88
DK		70 15 00 13
NO		22 63 00 93
SE		020 - 21 33 21
FI		020 377 877

www.oralb.com
www.braun.com
www.service.braun.com

Braun GmbH
Frankfurter Straße 145
61476 Kronberg/Germany

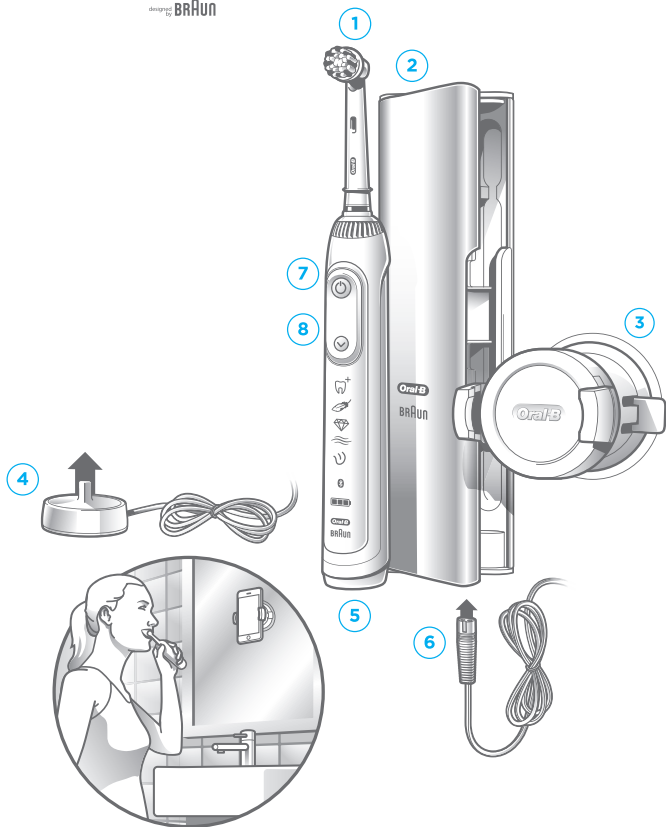
Basic Charger Type 3757
Handle Type 3765
Charging Stand Type 3755
Travel Case Type 3760
Smart Plug Type 492-5214

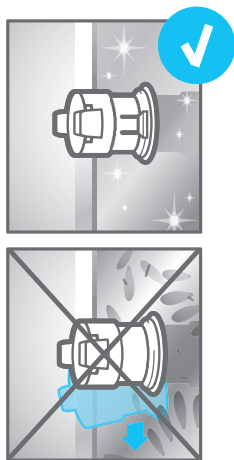
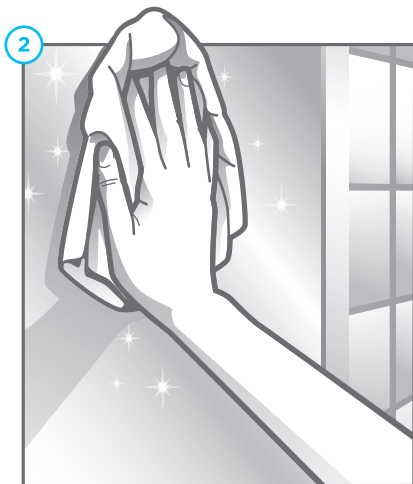
Note: Content may vary based on the model purchased.

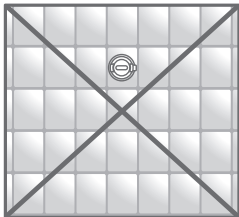
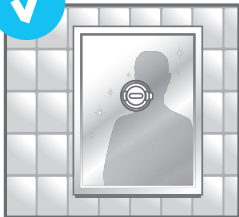
Oral-B®

GENIUS

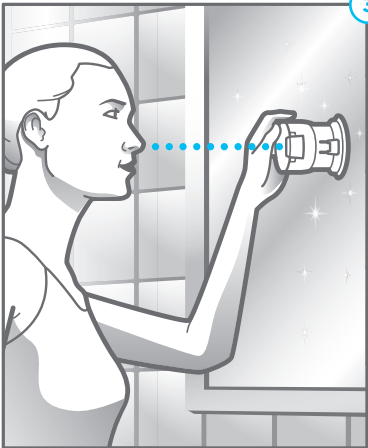
designed by BRAUN



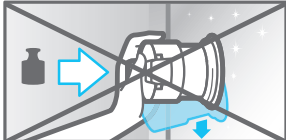
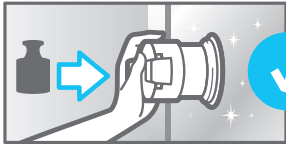
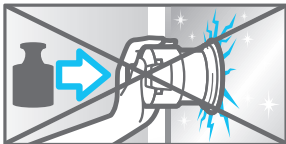
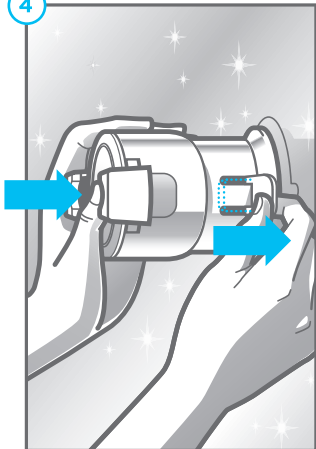


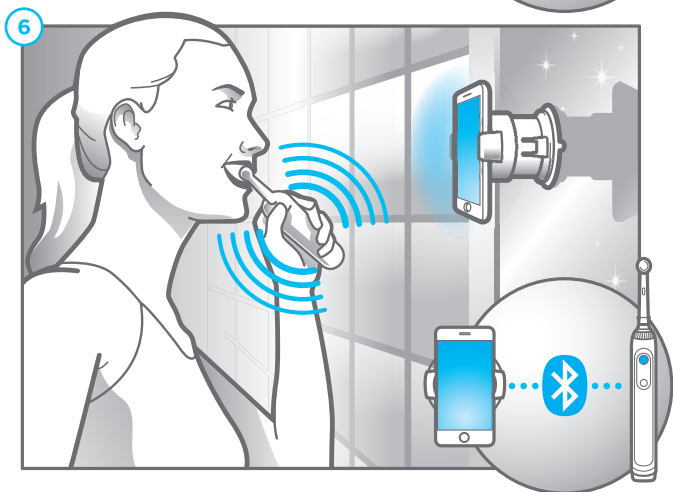
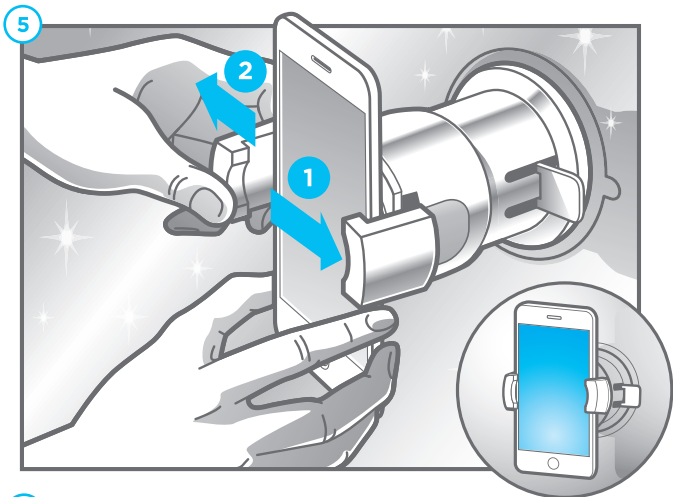


3

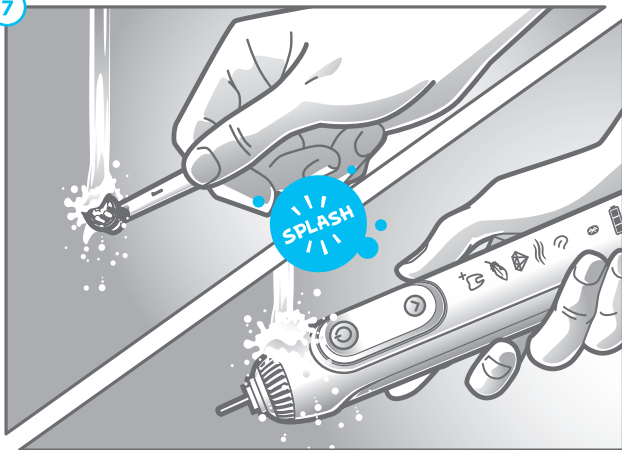


4

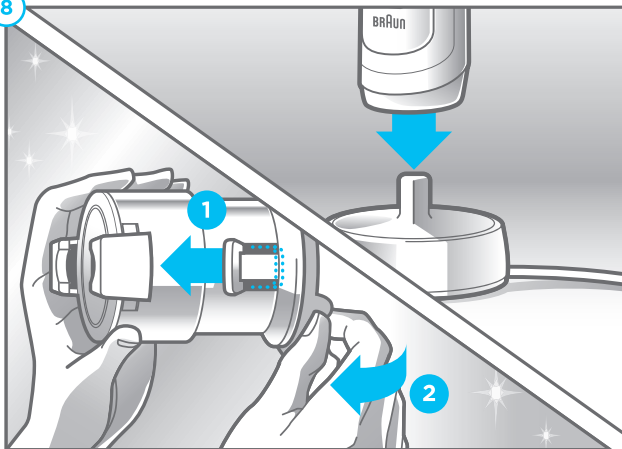




7



8



DE – Anleitung Schnellstart

Beschreibung

- ① Aufsteckbürste
- ② Reise-Etui mit Ladefunktion (modellabhängig)
- ③ Smartphone-Halter
- ④ Ladeteil oder Lade-Basis (modellabhängig)
- ⑤ Handstück
- ⑥ Smart Plug (modellabhängig)
- ⑦ Ein-/Ausschalter
- ⑧ Modusauswahl

Anmerkung: Inhalt kann je nach gekauftem Modell variieren.

EN – Quick Start Guide

Description

- ① Brush head
- ② Charging travel case (depending on model)
- ③ Smartphone holder
- ④ Charger or Charging Stand (depending on model)
- ⑤ Handle
- ⑥ Smart plug (depending on model)
- ⑦ On/off button
- ⑧ Brushing mode button

Note: Content may vary based on the model purchased.

FR- Guide de démarrage rapide

Description

- ① Brossette
- ② Etui de voyage chargeur (suivant le modèle)
- ③ Porte Smartphone
- ④ Chargeur ou Socle de charge (suivant le modèle)
- ⑤ Corps de brosse
- ⑥ Smart Plug (suivant le modèle)
- ⑦ Bouton Marche/Arrêt
- ⑧ Bouton Mode de brossage

A noter : le contenu peut varier suivant le modèle acheté.

ES – Guía rápida de inicio

Descripción

- ① Cabezal del cepillo
- ② Estuche y cargador de viaje (según el modelo)
- ③ Soporte del Smartphone
- ④ Cargador o base del cargador (en función del modelo)
- ⑤ Mango
- ⑥ Enchufe inteligente (en función del modelo)
- ⑦ Botón de encendido/apagado
- ⑧ Botón del modo de cepillado

Nota: El contenido puede variar en función del modelo adquirido.

PT – Guia de Introdução

Descrição

- ① Cabeça de escova
- ② Bolsa de viagem de carregamento (de acordo com o modelo)
- ③ Suporte de smartphone
- ④ Carregador ou suporte de carregamento (dependendo do modelo)
- ⑤ Cabo
- ⑥ Ficha inteligente (dependendo do modelo)
- ⑦ Botão ligar/desligar
- ⑧ Botão de modo de escovagem

Nota: O conteúdo pode variar dependendo do modelo adquirido.

IT – BREVE MANUALE D'ISTRUZIONI

Descrizione

- ① Testina
- ② Custodia da viaggio con caricatore (in base al modello)
- ③ Supporto Smartphone
- ④ Caricatore o Base di ricarica (in base al modello)
- ⑤ Manico
- ⑥ Spina Smart (in base al modello)
- ⑦ Pulsante on/off

- ⑧ Pulsante per selezionare Modalità di Spazzolamento

Nota: Il contenuto può variare in base al modello acquistato.

NL – Gids voor snel opstarten

Omschrijving

- ① Opzetborstel
- ② Oplaadbare reisetui (afhankelijk van het model)
- ③ Houder voor smartphone
- ④ Oplader of Oplaadstandard (verschilt model)
- ⑤ Handgreep
- ⑥ Smartplug (verschilt model)
- ⑦ Aan/uit knop
- ⑧ Poetsfunctie knop

Let op: Inhoud kan per model verschillen.

DK – Hurtigguide

Beskrivelse

- ① Børstehoved
- ② Rejseetui til oplader (afhængig af model)
- ③ Holder til smartphone
- ④ Oplader eller Opladerholder (afhængig af model)
- ⑤ Tandbørste
- ⑥ Smart-stik (afhængig af model)
- ⑦ Tænd/sluk-knap
- ⑧ Knap til børstefunktion

Bemærk: Indhold kan variere afhængig af model.

NO – Hurtigguide

Beskrivelse

- ① Børstehode
- ② Reiseetui med lader (avhengig av modell)
- ③ Smarttelefon
- ④ Lader eller ladeholder (avhengig av modell)
- ⑤ Håndtak
- ⑥ Smartplugg (avhengig av modell)

- ⑦ På/av-knapp
- ⑧ Knapp for børsteinstillinger

Merke: Innholdet kan variere avhengig av modell.

SE – Snabbstartsguide

Beskrivning

- ① Borsthuvud
- 2 Laddnings-resefodral (beroende på modell)
- 3 Smartphone-hållare
- 4 Laddare/laddningsstation (beroende på modell)
- 5 Tandborsthandtag
- 6 Smart-kontakt (beroende på modell)
- 7 På-/av-knapp
- 8 Knapp för borstningsfunktioner

Observera: Innehållet kan variera beroende på vilken modell som köpts.

FI – Pikaopas

Kuvaus

- ① Harjaspää
- ② Lataava matkakotelo (riippuen mallista)
- ③ Älypuhelimien pidike
- ④ Laturi tai latausteline (riippuen mallista)
- ⑤ Runko-osa
- ⑥ Smart plug (riippuen mallista)
- ⑦ Virtapainike
- ⑧ Harjausasetuspainike

Huomaa: Sisältö saattaa vaihdella riippuen mallista.