



 **Revo**

**It's the simple things.**

45°C

## Warm Air Drying

Keeps a fresh and clean scent by preventing the mop and cleaning tank from developing unpleasant odors.



# Auto Mop Washing

No need to wash the mop manually after cleanups thanks to the cleaning tank and adjustable water supply that removes all stains.





## Auto Tank Refilling

Fills water tank automatically for a max mopping range of 400 sqm.

\* Based on internal testing carried out by the manufacturer in Quiet mode on hard floors with a full battery and with no mop system attached. Actual results may vary according to the home environment.

# Auto Dust Emptying

Empties into dust bag and allows for up to 7 weeks without emptying.



# 7 Weeks





## Detachable Dock Base


The easily detachable dock base allows thorough cleaning for your convenience.



 **30%**

## **Fast Charging & off peak**

Quickly resumes cleaning by charging 30% faster. Off-Peak charging is supported.

 **Off-peak Charging**

\*Compared to Roborock S7. Based on internal testing carried out by the manufacturer. Actual results may vary according to the home environment.

## Dual Spinning Mops

Effortlessly remove stains with 200 RPM spinning speed and consistent downward pressure.

**200** RPM  
Spinning Speed





# 5500Pa Extreme Suction

5500 Pa Extreme Suction- Dust and dirt are easily captured from different floor types for better home cleanups.

\*Based on internal testing carried out by the manufacturer according to IEC 62885-2:2021/5.11 standards, using Max+ mode with a full battery. Actual results may vary according to the home environment.





## Auto Mop Lifting

7mm lifting for carpet vacuuming and floor cleaning in one go, with no dirty streaks left behind.





## All-Rubber Brush

Tackle hair without tangling, the brush floats on a multi-directional frame for effective cleaning.

# Reactive Tech Obstacle Avoidance

Avoids potential hazards precisely so  
cleanups are a breeze.



# Smart Suggestions for No-Go-Zones

Auto detects easy-to-get stuck and places  
and prevents the robot from getting stuck.





# PreciSense® LiDAR Navigation

Quickly scans your home and creates detailed maps for the optimal cleanup route.



# Quick Mapping

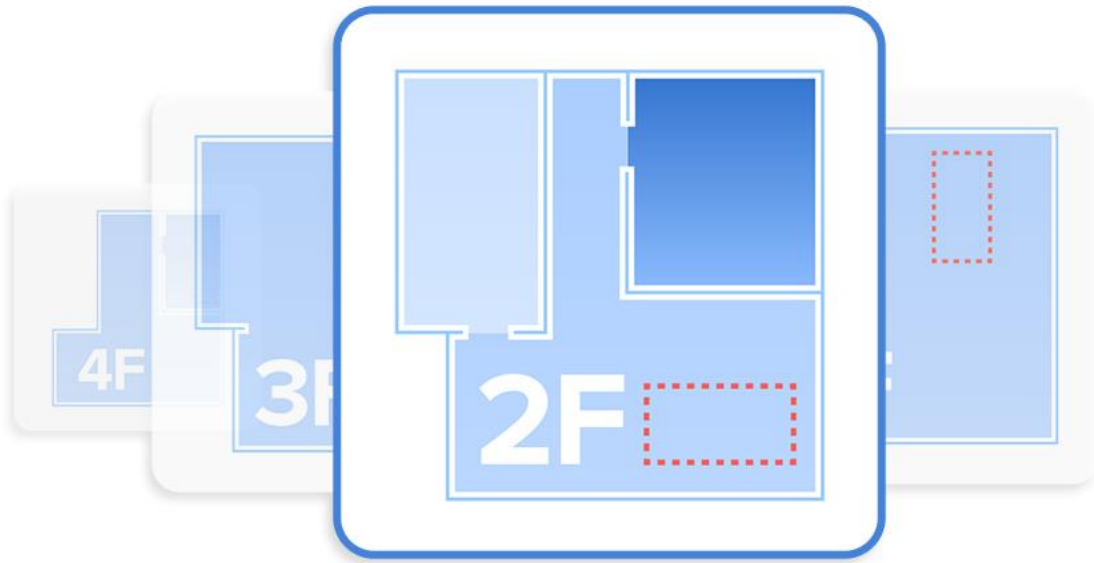
Your robot vacuum can create a map up to 6 times faster\* before the first cleaning task.



\* Compared to Clean&Mapping mode. Actual results may vary according to the home environment.

# Multi-level Mapping System

Automatically recognizes distinct levels of your home so all you do is put the robot down. Up to four floors supported.





# 3D Mapping

Build your house virtually with details like furniture for an accurate map for the best possible clean.

