

# Qrevo Edge 2 Pro

The Sharp Choice.



\*Images are for illustration purposes only and may not exactly represent the product.



## Qrevo Edge 2 Pro

From carpets to corners, experience truly powerful, adaptive cleaning with the Qrevo Edge 2 Pro—seamlessly paired with an advanced multifunctional dock that keeps your floors hygienic, your hands free, and your home healthier for the whole family.



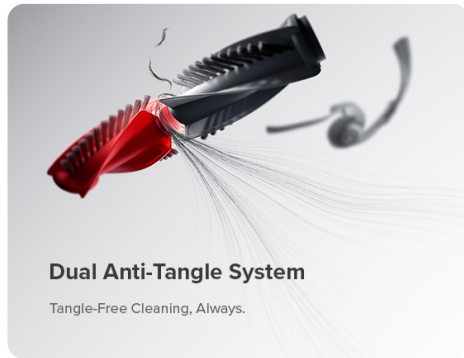
### Industry-First<sup>1</sup> AdaptiLift Chassis

Engineered for Redefined Dynamic Carpet Cleaning.



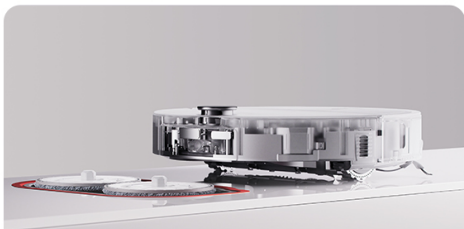
### Outstanding Cleaning Power

25,000 Pa HyperForce Suction<sup>2</sup> & 12N Dual-Spinning Mop System<sup>3</sup>



### Dual Anti-Tangle System

Tangle-Free Cleaning, Always.



### Automatic Mop Detachment

Mop detaches automatically to protect carpets from moisture.



### Hygienic Multifunctional Dock

100°C Hot Water<sup>4</sup> Mop Washing and Auto Detergent Dispenser for a Deeper Clean.



### 7.98 cm Ultra-Slim Design

Cleans under low furniture with effortless ease.

## AdaptiLift Chassis

# Climbs, Lifts, and Cleans Like No Other



### Industry-First Dynamic Cleaning<sup>5</sup> for Up to 3cm Carpets

Experience industry-first dynamic chassis elevation with omni-directional wheels, the robot intelligently adjust the body height to maintain optimal suction contact on carpets up to 3cm.\* This ensures deep, consistent cleaning on carpets up to 3cm of varying pile heights—finally delivering on the promise of real carpet cleaning performance.

\* This function needs to be manually enabled in the Roborock app. Based on internal testing carried out by the manufacturer. Actual results may vary depending on environmental factors.



**25,000 Pa HyperForce Suction**

## Next-Level Suction for Ground-In Dirt

Conquer every surface with confidence. Boasting 25,000 Pa of ultra-strong suction—among the highest in its class<sup>7</sup>—it effortlessly lifts embedded dust and debris, even from dense, high-pile rugs.

**25,000 Pa**

Max Suction Power<sup>2</sup>



## Smart Strategy for Every Carpet



Want to deep clean carpets or avoid them entirely? One tap is all it takes. Your robot adapts: stronger suction when cleaning carpets with the mop lifted, or precise edge-cleaning to skip rugs and keep them dry\*. You're in control of every room, every rug, every time.

\*These carpet cleaning settings need to be manually enabled and selected in the Roborock app.

Upgraded Mopping Performance

## Flawless Finishes, Every Time

Scrub away tough stains with dual rotating mops that apply up to 12N of downward pressure and warm water.

**12N**

Max Downward Mopping Pressure<sup>3</sup>

**200 RPM**

Spinning Speeds<sup>8</sup>



## Automatic Mop Detachment

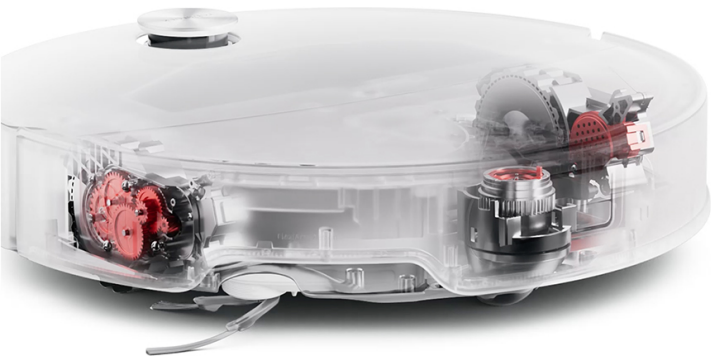
# Mop Adjusts So You Don't Have To

Transition seamlessly from hard floors to carpets with an auto-detaching mop. When vacuum-only or carpet-first modes are enabled, the mop is intelligently removed, avoiding moisture transfer and keeping carpets dry, fluffy, and fresh.



## Liftable Brush and Mops

# Adjusts Intelligently to Every Scene



### Vacuum Only:

Keeps floors dry while maintaining powerful suction during vacuuming.



Mops detached  
Main brush lowered

### Mop Mode:

Prevents dust recontamination during wet mopping.



Main brush lifted

### Clean Carpet:

Protects carpets from moisture while maximizing cleaning performance

- Clean Carpet First



Mop detached  
Chassis lifted

- Usual Cleaning Path



Mop lifted  
Chassis lifted

## Dual Anti-Tangle System

# No More Hair Hassles



Long hair? No problem. The DuoDivide Main Brush and FlexiArm Side Brush work together to actively reduce hair entanglement—even with strands up to 40cm long. Just enjoy seamless vacuuming from start to finish.

### DuoDivide Main Brush

**0%**

Hair Tangling Rate<sup>9</sup>

**100%**

Hair Removal Rate<sup>10</sup>



### FlexiArm Arc Side Brush

**0%**

Hair Tangling Rate<sup>11</sup>



## FlexiArm Technology

# Corners, Cracks, and Edges—Covered

Roborock's exclusive FlexiArm Arc Side Brush and Edge Mopping System reaches into hard-to-clean crevices and along walls, delivering unmatched edge-to-edge performance and full perimeter coverage.

**100%**

Edge and Corner Coverage<sup>12</sup>

**0mm**

Along the Edge and Corner<sup>12</sup>





## **Multifunctional Dock 3.0 Hygiene+**

# 100°C Hot-Water Mop Washing

Up to 100°C<sup>4</sup>

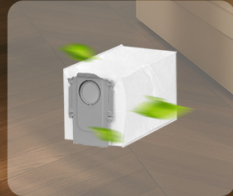
Hot-Water Mop Washing

99.99%

Bacteria Removal Rate<sup>13</sup>



Using up to 100°C hot water<sup>4</sup>, our Multifunctional Dock 3.0 Hygiene+ helps loosen stubborn dirt, food residue, and greasy stains from the mop pads. With every wash, mops are refreshed more effectively—supporting a more thorough and hygienic floor clean.



## Dust Bag Fresh-Air Drying

Ambient airflow helps dry residual moisture in the dust bag, reducing odors and keeping the dock fresh.





### Dust Bag Fresh-Air Drying

Ambient airflow helps dry residual moisture in the dust bag, reducing odors and keeping the dock fresh.



### 100°C Hot Water Dock Self-Cleaning

The dock base stays hygienic with up to 100°C<sup>2</sup> hot water and the self-cleaning module, reducing manual maintenance.



### Intelligent Dirt Detection for Re-Wash & Re-Mop

Dirt levels are continuously monitored during mop washing, adjusting the wash duration and triggering an extra mopping pass for areas with higher dirt accumulation.



### 55°C Warm Air Drying

Dries the mops and dock base thoroughly with 55°C<sup>14</sup> of warm air, preventing the growth of mold and unpleasant odors.



### Warm Water Auto-Refilling

Fills the robot's water tank with warm water automatically when needed.



### Auto Detergent Dispenser

Equipped with an auto detergent dispenser, the dock automatically adds cleaning solution for a more thorough and effortless mop cleaning.



### Auto Dust Emptying

Allows for up to 65 days<sup>15</sup> without manual emptying.



### Detachable Dock Base

The dock base is fully detachable for easy washing when needed.



# Whole-Home Wellness, From Start to Finish.

Every clean, every cycle—designed for sensitive users and healthier homes. Certified<sup>16</sup> for allergy care, infants, and furry family members.





**7.98cm Ultra-Slim Design**

## Reach Where Others Can't

At just 7.98cm tall, this is one of the slimmest<sup>17</sup> Roborock equipped with a full LiDAR system. The retractable LDS allows it to glide effortlessly under low furniture, reaching places other vacuums can't—and leaving no dust behind.

**100% Success Rate**

Cleaning in Spaces  $\geq 7.98\text{cm}$  High<sup>18</sup>

## RetractSense Navigation System

# Rise, Retract, Navigate Anywhere

### In Open Spaces:

Stays elevated for 360° scanning and precise mapping.



### Under Furniture:

Automatically retracts with a 100° rear view—cleaning tight spaces with accuracy.



## Precision Sensors, Reliable Design.

### • Upward Range Finder:

Measures overhead clearance for automatic LDS adjustments.



### • Top Contact Sensor:

Detects overhead obstacles, preventing bumps and scratches.



**Cycle-Tested Durability:** LDS mechanism validated through 10,000+ lift-and-retract cycles for long-term reliability.<sup>19</sup>



## Reactive AI Obstacle Recognition

# Accurate Object Recognition, Day or Night

No need to tidy up before cleaning. Powered by structured light and an RGB camera, the robot spots and avoids over 200 types of common clutter—from tangled cables to pet surprises—day or night.



## 200+

Types of Objects Recognized<sup>20</sup>

**VertiBeam Lateral Obstacle Avoidance**

## Ensures Accurate Edge Detection

The VertiBeam lateral laser system precisely measures the distance to side obstacles, enabling accurate edge cleaning along furniture and surrounding objects.



Roborock SmartPlan 3.0

# One Tap to AI-Driven Cleaning

From recognizing room types to tracking usage habits, Roborock SmartPlan 3.0 tailors every session—boosting suction when needed, and rewashing when it matters. Smarter cleaning, all with just one tap.



Automatically performs a vacuum-then-mop routine in rooms left uncleaned for over 30 days.

Automatically deep cleans rooms that have not been cleaned for a long time

Lowers power and reduces noise during Do-Not-Disturb periods

Re-washes the mops right after cleaning kitchens and bathrooms or after a second mopping pass

## Built-in Intelligent Voice Assistant

Say **“Hello Rocky”** for Help

*“Clean here”*

*“Clean the kitchen”*

*“Just vacuum”*

Simply say “Hello Rocky” to initiate cleanups or adjust settings—no need to lift a finger. Your intelligent voice assistant is always ready to help, even without an internet connection.

## Pet-Friendly Intelligence

# Closer to Your Furry Friends



### Video Call

Real-time video calls and two-way voice interaction allow you to "talk" with your cute pets in a unique way.

### Automatic Pet Recognition

When approaching kittens or puppies, the robot immediately stops its main brush and moves aside to avoid startling your beloved pets.



### Pet Snaps

The robot can capture adorable snapshots of your furry friends during cleanups, and these are readily available for you to download.



### Search for Your Pet

The robot can automatically search for pets, finding where they're hidden. You can also check your pet's location and status when you're away.



## Matter Protocol

# Embrace the Future of Smart Living

With Matter protocol support, seamlessly control your robot vacuum and other smart devices with no compatibility concerns. Enjoy the simplicity of a fully connected home.



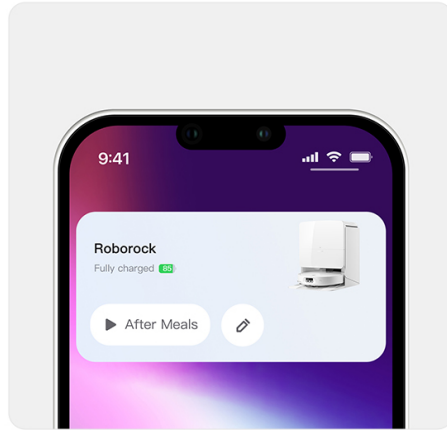
\*The Matter protocol will be available through an upcoming OTA. Please stay tuned for the latest updates.

## Works Great with



### Third-Party Voice Control

Voice commands via Amazon Alexa, Apple Siri Shortcuts, or Google Home.



### Launcher Widgets

One-click access to custom cleaning routines.



### Apple Watch App

Quickly start cleanups or do a status check.

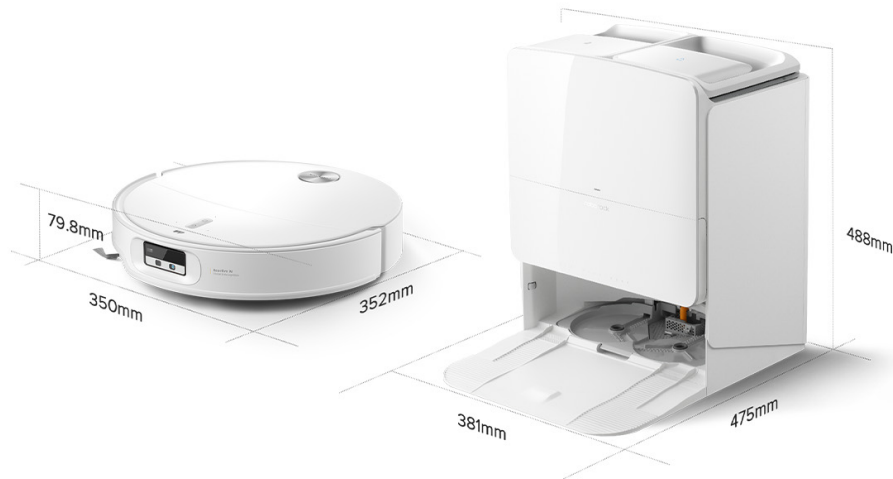
## Qrevo Edge 2 Pro

### Robot

350 \* 352 \* 79.8 mm  
(13.78 \* 13.90 \* 3.14 Inches)

### Dock

381 \* 475 \* 488 mm



\*Images and videos are for illustration purposes only and may not exactly represent the product. The app interface is subject to change without notice.

1. Roborock was the first in the robot vacuum industry to mass produce a product featuring a liftable chassis system with three-wheel control, officially launching this technology in Q3 2024. Its threshold-crossing capability is based on internal testing carried out by the manufacturer. This product is tested to cross thresholds up to 4cm, including a 3cm threshold plus an additional 1cm track on top for double-layer thresholds, or up to 3cm for single-layer thresholds. Actual results may vary depending on environmental factors.
2. Based on internal testing carried out by the manufacturer. Actual results may vary depending on environmental factors.
3. Based on internal testing conducted by the manufacturer. The maximum downward mopping pressure is achieved when the "Deep Cleaning for Heavy Dirt or Stains" function is manually enabled in the Roborock app. Actual results may vary depending on environmental conditions.
4. Based on internal testing conducted by the manufacturer. The water at the clean water dispensers of the base can be heated up to 100°C (212°F) under standard atmospheric pressure (1 atm, 101.3 kPa) at room temperature. Actual temperatures may vary depending on environmental conditions such as altitude and atmospheric pressure.
5. This feature is powered by Roborock's AdaptiLift Chassis—the industry's first mass-produced liftable chassis system with three-wheel control, launched in Q3 2024. The dynamic carpet cleaning capability was officially introduced in Q3 2025.
6. Based on Roborock internal testing using Max+ mode. Compared to the performance on the 2cm long-pile carpets of previous Roborock vacuum robots. Actual results may vary according to the home environment.
7. Based on research conducted by Roborock as of November 2025, Qrevo Edge 2 Pro delivers the one of the highest suction power among all Roborock robot vacuums.
8. Based on internal testing carried out by the manufacturer, when selecting extreme water flow in custom mode, the mops can spin at a maximum speed of 200 rpm. Actual results may vary depending on environmental factors.
9. Certified No.PT/25/GEN/0342 by SGS. Actual results may vary according to the home environment.
10. Certified No.PT/25/GEN/0341 by SGS. Actual results may vary according to the home environment.
11. Certified No.PT/25/GEN/0340 SGS. Actual results may vary according to the home environment.
12. Based on internal testing conducted by the manufacturer using side brush for edge and inside-corner sweeping performance. Actual coverage and distance may vary depending on the home environment.
13. Based on testing carried out by TÜV Rheinland on Escherichia coli under default self-cleaning mode, over 99.99% of bacteria on the spinning mops are effectively removed. Certification ID: 0000088785. Actual results may vary according to the home environment.
14. Based on internal testing carried out by the manufacturer, the air at the base's outlet during drying can be heated up to 55°C under standard room temperature. Actual temperatures may vary due to environmental factors.
15. Based on internal testing carried out by the manufacturer. Actual emptying intervals will depend on usage habits and environmental factors.
16. Based on testing carried out and certified by SGS and TÜV SÜD. Actual results may vary depending on the home environment. Certification ID: No.PT/25/GEN/0370, No.Z2GCN1238210008, No.Z2GCN123820009.
17. Based on research conducted by Roborock, as of November 2025, the Qrevo Edge 2 Pro is the thinnest model among Roborock's vacuum robots.
18. Based on internal testing carried out by the manufacturer. Actual results may vary depending on environmental factors.
19. Based on internal testing carried out by the manufacturer. Actual results may vary depending on environmental factors.
20. Based on internal testing carried out by the manufacturer, the robot vacuum can see and bypass objects down to as small as 5cm wide and 3cm tall. Recognition accuracy may vary depending on environmental factors.